



University of
Salford
MANCHESTER

Worsley New Hall: A Guide to Sources

Alexandra, Mitchell

Title	Worsley New Hall: A Guide to Sources
Authors	Alexandra, Mitchell
Publisher	University of Salford
Type	Monograph
USIR URL	This version is available at: http://usir.salford.ac.uk/id/eprint/28344/
Published Date	2012

USIR is a digital collection of the research output of the University of Salford. Where copyright permits, full text material held in the repository is made freely available online and can be read, downloaded and copied for non-commercial private study or research purposes. Please check the manuscript for any further copyright restrictions.

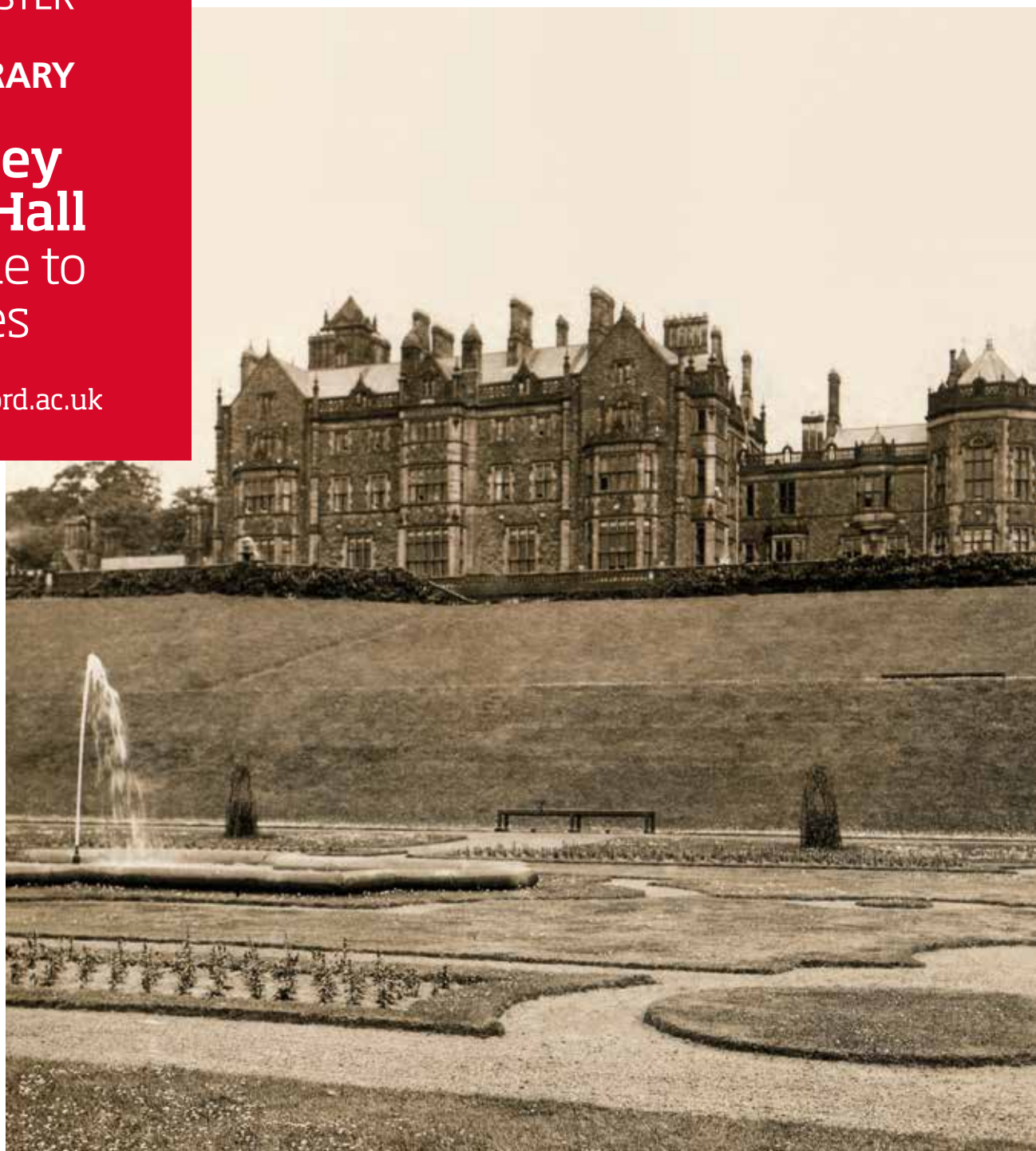
For more information, including our policy and submission procedure, please contact the Repository Team at: library-research@salford.ac.uk.

University of
Salford
MANCHESTER

THE LIBRARY

**Worsley
New Hall**
A guide to
sources

www.salford.ac.uk



Contents

	Preface	06
1.	History of Worsley New Hall	08
2.	Archives	10
2.1	British Red Cross Museum and Archives	10
2.2	Cambridge University Library Department of Manuscripts and Archives	10
2.3	Chetham's Library, Manchester	10
2.4	Lancashire Archives	11
2.5	Liverpool Record Office	12
2.6	Manchester Archives and Local Studies with Greater Manchester County Record Office	12
2.7	Northampton Record Office	13
2.8	The Royal Archives	13
2.9	RIBA Library Drawings and Archives Collection	13
2.10	Salford City Archives and Local History Library	20
2.11	Staffordshire Record Office	21
2.12	The University of Salford Archives and Special Collections	22
2.13	Private Collections	23
3.	Selected newspaper and journal articles	24
4.	Books and pamphlets	26
5.	Theses	29
6.	Web resources	30
7.	Archaeological reports	33

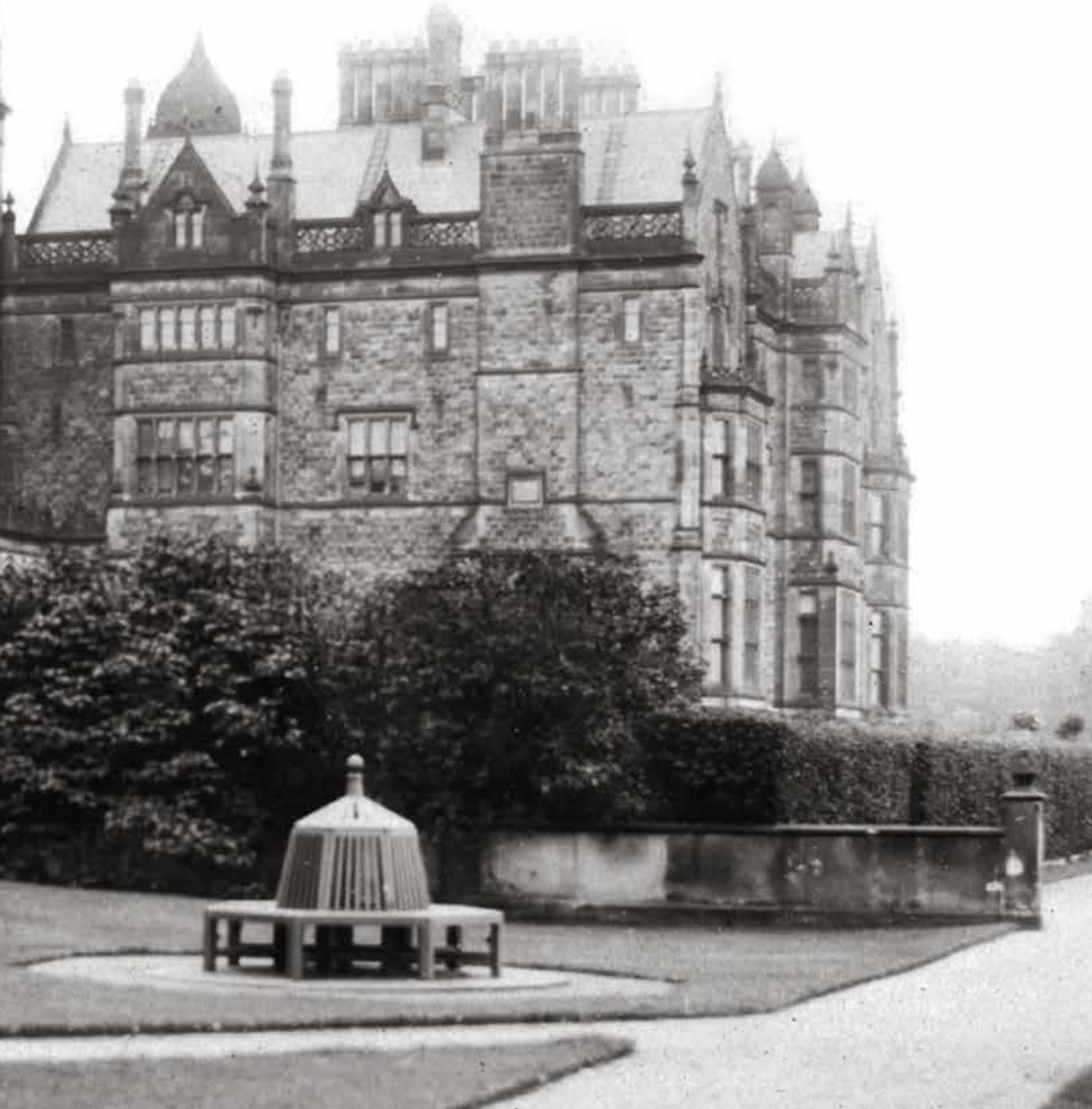


A home for a family. Built in 1846, serving four generations of the Earls of Ellesmere.

A retreat for royalty. Queen Victoria visited in 1851 and 1857, King Edward visited in 1909.

A place of beauty. Boasting one of Lancashire's most impressive gardens, with intricately designed terraces and a boating lake.

A wartime infirmary. Loaned by the 4th Earl and his wife to the British Red Cross in 1914.



Preface

This bibliography is intended as a guide to material about Worsley New Hall, the Lancashire seat of the Earls of Ellesmere built in the 1840s in Worsley, Salford.

It identifies original documents from various archive repositories, along with printed works and web resources, which together provide information about the design, building and administration of the Hall and the surrounding estate during the nineteenth and twentieth century.

The publication of this bibliography is an outcome of the Worsley New Hall Project, a joint venture between The Library at the University of Salford and Peel Holdings (Management) Ltd., which took place in 2012 to research and collate historical sources relating to the building, the Earls of Ellesmere and the local area.

The project supported an archaeological excavation of the site which took place in spring 2012, funded by Peel Holdings (Management) Ltd and led by the Centre for Applied Archaeology at the University of Salford.

The material contained in this bibliography is primarily organised by resource type, and includes archives, selected newspaper and journal articles, books and pamphlets, web resources and reports. The section on archives includes contact details for individual repositories along with descriptions of records relating to the New Hall. Printed and published articles, books and pamphlets have been organised thematically.

**Dr Alexandra Mitchell, Project Officer
(Worsley New Hall)**

The University of Salford, 2012



W. Bonnell

1. History of Worsley New Hall

This section provides a brief history of Worsley New Hall, built between 1839 and 1846, as the Lancashire seat for four generations of the Egerton family and Earls of Ellesmere.

It is intended as a general introduction to the subject and to provide some context for the bibliography that follows.

The site of the former New Hall is located to the west of Worsley village, positioned between Leigh Road and the Bridgewater Canal, and has an interesting and varied history. The Hall was part of the Worsley Estate belonging to the Egerton family, and was sold along with the rest of the Ellesmere Estates in 1923 to Bridgewater Estates Limited. Although the Hall was demolished in the 1940s, parts of the complex including the Gardener's Cottage, Kitchen Gardens and wider grounds continued to be used long after the Hall had been pulled down.

Building the New Hall

Worsley New Hall was built by Lord Francis Egerton who inherited the Worsley Estate from the 3rd Duke of Bridgewater in 1833. Following the death of the 3rd Duke in 1803, Worsley, along with his other estates in Lancashire, Cheshire and Northamptonshire, were placed in a trust for the benefit of his nephew, George Granville Leveson-Gower, Marquess of Stafford and 1st Duke of Sutherland. According to the terms of the 3rd Duke's will, in the event of his nephew's death, the Estate passed to the Duke of Sutherland's second son, Francis

Leveson-Gower, but only on the condition that he assumed the name and arms of Egerton.

Lord Francis came to live at Worsley in 1837 and soon after commissioned the design of a new building to replace the existing Brick Hall built by the 3rd Duke in the 1700s, as his domestic residence. The New Hall was designed by Edward Blore (1787-1879), an experienced country-house architect. Blore had a reputation for delivering buildings on time and to budget and had been appointed by the Government in 1832 to complete Buckingham Palace following the dismissal of John Nash.¹ Blore had also carried out work for Sir Francis prior to the design of the New Hall, including alterations and additions to Worsley Old Hall in 1835 and the remodelling of Hatchford Park, near Cobham in Surrey.

Work began on the foundations for the New Hall in 1839, and in 1840 the first stone was laid. It was built in an Elizabethan Gothic style, faced in Hollington Stone quarried in Staffordshire and comprised a symmetrical main block, three stories in height with a family wing on one side, and a tower and

servant's wing to the other. The New Hall was one of a group of stylistically similar Elizabethan Gothic houses that Blore was working on at the time, including Merevale Hall in Warwickshire, built between 1838 and 1844 for the landowner W. S. Dugdale. Costing just under £100,000 to build, the New Hall at Worsley was one of Blore's biggest houses. Over 400 of his original plans for the Hall and his account books survive at RIBA Drawings and Archive Collections at the Victoria and Albert Museum in London, while the site ledgers detailing the construction of the building are deposited in the Cambridge University Library. The Hall was completed in 1846, the same year Lord Francis was elevated to the Peerage as 1st Earl of Ellesmere. Blore continued to work on designs for the lodges to the New Hall site and the landing stage, built on the banks of the Bridgewater Canal for Queen Victoria's visit in 1851.

¹ H. Colvin, *A Biographical Dictionary of British Architects 1600-1840* (London, 1995), 3rd edition, p. 115.

² C. H. Curtis, 'Worsley New Hall, the Seat of the Earl of Ellesmere', *The Gardener's Magazine*, 24 August 1895, pp. 531-538. For further examples see section 3, 'Selected newspaper and journal articles.'

Gardens

The grounds at Worsley New Hall comprised a formal terraced garden descending from the south elevation of the house, surrounded by landscaped parkland. William Andrews Nesfield (1794-1881), the country's most sought after landscape designer, was involved in the development of the grounds in the 1840s. Nesfield is known to have worked on over 250 gardens including Castle Howard in Yorkshire; Trentham Park in Staffordshire for the Duke of Sutherland, and Witley Court, Worcestershire. He had previous experience of working with the architect Edward Blore at both Merevale Hall and Crewe Hall in 1841, as well as in the design of new gardens for the Earl of Ellesmere's remodelled house at Hatchford Park. At Worsley, Nesfield was responsible for the planting design on at least the two upper terraces where he drew on French designs and used turf, box, flowers and coloured gravels to create symmetrical and intricate patterned parterres, separated by broad gravel walkways. The gardens were praised in the nineteenth-century gardening press as amongst the finest of their type.²

The Gardener's Cottage was built by the Earl soon after he inherited the Worsley Estate, to provide living accommodation for the head gardener. It was located around three quarters of a mile from the New Hall and separated from it by a dense plantation of trees. Surrounding the Cottage was the Kitchen Garden, which extended over an area of around ten acres and comprised of walled quarters, peach houses, vineries and pine, melon and cucumber pits to supply produce to residents of the New Hall. The Bothy, constructed in the late nineteenth century to house the boilers for heating the greenhouses and garden walls, also provided living accommodation for the estates' unmarried gardeners. The longest serving head gardener at the New Hall was William Barber Upjohn, who

occupied the post for over 40 years. Despite retiring in 1914, Upjohn continued to live at the Gardener's Cottage until his death in 1939, renting it from the Ellesmere family and subsequently Bridgewater Estates Ltd. When the New Hall and estate was transferred to the ownership of Bridgewater Estates Ltd in 1923, the Kitchen Garden was let as a commercial market garden. Following Upjohn's death, the cottage was leased to Mr J. Whittingham who lived there until early 1948 when it was sold to Richard and Herbert Cunliffe who used the building as an office and dwelling for Worsley Hall Nurseries and Garden Centre. Unlike the Hall, the Gardener's Cottage and parts of the Kitchen Garden are still standing.

Twentieth century and the demise of the New Hall

Following the death of the 3rd Earl of Ellesmere in 1914, the Egerton family never again lived at the New Hall. At the outbreak of the First World War in 1914, the Earl and Lady Ellesmere lent the New Hall to the British Red Cross Society for use as a hospital for wounded soldiers. After the departure of the Society in 1919, the family struggled financially with the upkeep of the Hall and grounds. Hit by heavy death duties, in 1920 the 4th Earl began to break up the New Hall, selling items of its furniture and fittings at auction. Finally in 1923 the New Hall along with the Worsley Estate was sold to Bridgewater Estates Ltd., a syndicate of businessmen for just over £3,300,000.

Efforts made by Bridgewater Estates to sell the Hall in the 1920s and 1930s were without success, and during the Second World War the Hall was requisitioned by the War Office. Records from the Bridgewater Estates Archives at the University of Salford show that the Hall and grounds were used by the Home Guard and the 2nd/8th Battalion of the Lancashire Fusiliers for storage, accommodation and training. Records suggest that in 1944, the New

Hall and grounds were also temporarily occupied by American soldiers. Abandoned by the Egerton family and under military occupation, the Hall and its grounds fell into a state of disrepair. In September 1943 the top floor was badly damaged by fire and the rest of the structure weakened by dry rot and mining subsistence. Tenders were put out for its demolition and it was eventually sold to Sydney Littler, a scrap merchant from Ashton-in-Makerfield for £2,500. By 1949, just over 100 years after it had been built, the Hall was demolished.

With the Hall now gone, the grounds around the site were put to other use. Bricks from the building were sold to Hepton Urban District Council and used to construct houses on the Southfield Estate in West Yorkshire.³ In 1951 the War Department once again requisitioned part of the former site to build a reinforced concrete bunker, to be used as an Anti-Aircraft Operations Room (AAOR) to serve the Manchester Gun Defended Area.⁴ While the Hall was being demolished, parts of the grounds were let to the Boy Scout Association and were gradually developed over the course of the following decades to become known as Middlewood Scout Camp. In the 1980s, Bridgewater Estates Ltd., including the former New Hall site was bought by Peel Holdings (Management) Ltd. They are currently planning a redevelopment of the Worsley New Hall site.

³ 'From Mansion to Council Houses', *Hebden Bridge Times and Gazette*, 16 July 1948, p. 3.

⁴ N. Catford, *Subterranean Britain: Cold War Bunkers* (Bradford on Avon, 2010), pp. 123-124

2. Archives

The following section provides detailed information about records relating to the New Hall and Egerton family from archive repositories around the country.

For further information regarding access arrangements, please consult the institutional web pages or contact the repository before travelling.

2.1 British Red Cross Museum and Archives

44 Moorfields, London, EC2Y 9AL
t: 020 7877 7058
e: enquiry@redcross.org.uk

Holds one minute book relating to Worsley New Hall Hospital:

East Lancashire Branch General Purposes Committee Minute Book, 6 October 1914 - 13 June 1918.

These minutes provide information on the running and maintenance of the Hospital; patient admissions and discharges; illnesses and deaths; staffing and finance accounts. The volume also includes lists of voluntary officials and their positions, rules and meal times.

2.2 Cambridge University Library Department of Manuscripts and Archives

West Road, Cambridge, CB3 9DR
t: 01223 333030
e: admissions@lib.cam.ac.uk

The collections include papers and letters relating to the architect Edward Blore and the building of the New Hall:

Abstracts from clerks of work's returns regarding building work at various sites 1841 - 1848.

Details for Worsley New Hall can be found on pp. 1; 26; 46; 60; 74. The volume also provides information on the Parsonage and Infants School in Worsley; Walkden Moor School and the Bridgewater Trust Offices.
MS Add. 3951

Private Accounts 1826-1850.

Provides information on Blore's expenses for travelling to and from Worsley to inspect the works and drawing up plans for lodges houses.
MS Add. 3955

Private Accounts 1826-1841.

Includes expenses for travelling to and from Worsley to inspect the works and drawing up plans for lodges houses.
MS Add. 3956

Letter to Edward Blore from Lord Francis, Earl of Ellesmere 22 December 1859.

Regarding the new drawings of the addition to Worsley New Hall received by Lady Ellesmere and whether any of the suggestions made in a previous letter met Blore's approbation.
MS Add. 8170/39

2.3 Chetham's Library, Manchester

Long Millgate, M3 1SB
t: 0161 834 7961
e: librarian@chethams.org.uk

Chetham's holds a diary relating to Worsley New Hall Hospital and ephemera for the Worsley Pageant.

Diaries of Ernest Leech, 1875-1950: Book 1.

Leech was a consulting Physician at the Manchester Royal Infirmary and prior to the outbreak of war, held the post of Commandant of the Rusholme Division of the East Lancashire Division of the British Red Cross.

Leech was initially based at Neuburg House on Daisy Bank Road, one of the first Red Cross Hospitals in England, before moving to Worsley. He left in 1915 to join the Army Medical Corps abroad. Book 1 (out of 7) of the diaries includes 25 pages of correspondence relating to Worsley New Hall Hospital as well as photographs of the hospital wards, staff and patients.

Greater Manchester Cuttings Collection.

One box and two files of newspaper cuttings, letters, photographs and ephemera relating to Worsley New Hall and the Worsley Pageant which took place in the Hall grounds in 1914.

The Library also holds **The Mullineux Photographic Collection** which contains a large number of photographs and images relating to the New Hall and Earls of Ellesmere. Digitised copies are also available at Salford Local History Library. Files which relate to the New Hall are:

E LIV Bridgewater Canal, Worsley
Includes images of the Brick Hall; Royal Barge and boathouse; Queen Victoria's Landing Stage.

E LXIX Egerton Family Earls of Ellesmere
Includes images of the Royal Barge; Countess of Ellesmere, Lord and Lady Normanby; 2nd Earl of Ellesmere, Lord and Lady Brackley.

E LXX Worsley People
Includes a photograph of Mr Upjohn, Lord Ellesmere's gardener.

E LXXI Worsley Pageant
Includes photographs of the Pageant in the New Hall grounds.

E LXXII Worsley Monument and Gatehouses
Includes images of West Lodge, Church (North) Lodge, and entrance gates to Worsley New Hall.

E LXXVIII Worsley Miscellaneous
Includes images of Leigh Road and Worsley New Hall.

E LXXV Worsley Brick Hall and Worsley New Hall, c. 1900 - 1968
Images, photographs and postcards depicting south, north east and west views of Worsley New Hall; the lake; the bridge to the island in the lake; demolition of the New Hall; the fountain; ice house; driveway; New Hall Gardens; Gate House to the New Hall; Head Gardener's House; old and new Bothy; boiler house; steam boiler.

E LXVIII Royal Visits to Worsley, c. 1909
Photographs include the Landing Stage on the canal for Queen Victoria and King Edward VII and Queen Alexandra at Worsley Hall.

2.4 Lancashire Archives

Bow Lane, Preston, PR1 2RE
t: 01772 533039
e: record.office@lancashire.gov.uk

Holds correspondence of Lord Francis Egerton mainly regarding Chartism, but with references to Worsley; a photocopy of a large scale 'Plan of the Estates in 1840'; papers relating to Queen Victoria's visit in 1851 and letters from Thomas Hope Floyd, patient at Worsley New Hall Hospital in 1917.

Lady Harriet Egerton to James Lock, Undated c. 1839

Regarding Hatchford, Lord Francis' illness, regret that Lord and Lady Egerton will not be able to spend the summer at Worsley and other family news.
DP/378/3

Lord Francis Egerton of Worsley to James Lock of London, 3 May 1839

Refers to Chartist agitation in Manchester. Asks 'would it be possible to take any precautions for placing the books and other documents at the Worsley Office for

security, I care little about the house.'
DP/378/4

Lord Francis Egerton of Worsley to James Lock of London, 18 August 1839

Refers to the levelling in of the greenhouse.
DP/378/10

Lord Francis Egerton of Worsley to James Lock of London, 22 August 1839

Refers to a visit to the Pemberton property, service on the Grand Jury; work on the greenhouse, plantings and a suicide.
DP/378/11

Lord Francis Egerton of Worsley to James Lock of London, 29 August 1839

Refers to a purchase of arms against future Chartist riots and Blore's 'admirable' plans.
DP/378/12

Photocopy of **A Plan of the Estates of the Trustees of the late Duke of Bridgewater and Lord Francis Egerton, 1840**. Entitled: 'General Plan on a reduced scale of the Estates belonging to Trustees of the late Duke of Bridgewater and Lord Francis Egerton situated in the several townships of Worsley, Barton, Middle Hulton, Little Hulton, Farnworth, Grt Lever, Leigh and Bedford in the parishes of Eccles, Dean Middleton and Leigh in the County of Lancaster 1840'. This map shows the location of the Old Hall, New Hall (Brick Hall) and site of the 'Proposed New Hall', located within an area of land belonging to the Trustees Estate, and not in Lord Egerton's Private Estate. Note that this is only a photocopy donated by Frank Mullineux in the 1960s, and Lancashire Archives does not hold the original.
DDX 149/16

Papers relating to the Queen's visit to Worsley.

Bundle includes a tracing paper map showing the canal through Worsley, a list of persons requiring tickets and the names of special constables appointed for the event. Also includes correspondence and tickets, 1851.

NCBw/19/5

Thomas Hope Floyd Letters, Worsley New Hall Hospital.

Letters dated 3, 6, 11, 12 August 1917 written by Floyd to his parents from Worsley New Hall Hospital. Floyd was a patient at the Hospital following the 3rd Battle of Ypres and was transferred to Eaton Hall, Cheshire. The letters include an account of the battle; his arrival at Worsley Hall, 'the splendid mansion of the Egertons of Ellesmere'; reference to the curate of Atherton and arrangements to meet his father in St Ann's Square, Manchester.

DDFL/3/6

2.5 Liverpool Record Office

Liverpool Central Library and Archive, William Brown Street, is currently undergoing refurbishment and will re-open in 2013. For information regarding access to the archive collection check the Library web pages or contact:

e: archives@liverpool.gov.uk

Various correspondences with Lord Francis Egerton, 1st Earl of Ellesmere:

Egerton Ellesmere, Worsley, Manchester to Rev Alfred J Tomlin, St Michaels Church, Liverpool 20 September 1851.

Regarding societies for the provision of additional curates.

920 TOM/512/1

Lord Francis, Earl of Ellesmere to Lord Derby.

Five letters dating 1845 – 1852, regarding the country's defence against foreign aggression; Lord Brackley and the tomb of the Duke of Wellington.

920 DER (14) 140/4/1-5

2.6 Manchester Archives and Local Studies with Greater Manchester County Record Office

Manchester Archives at Central Library is undergoing refurbishment. The Archive is currently located at the Greater Manchester County Record Office, 56 Marshall Street, New Cross, Manchester, M4 5FU. The Local Studies Collection containing local history books, microfilm/microfiche and electronic resources are available at the Manchester Room@City Library, Elliot House, 151 Deansgate, Manchester, M3 2HN. The new Archive+ centre at Central Library will open in 2014.

e: archiveslocalstudies@manchester.gov.uk

Worsley, St Mark's Collection (L118).

St Mark's, Worsley in the Parish of Eccles was built at the expense of Lord Francis Egerton, 1st Earl of Ellesmere around the same time as the New Hall and consecrated in 1846. It was designed by Sir George Gilbert Scott (1811 - 1878). The collection includes Baptism registers, Marriage registers, Church Magazines, Churchwarden and Vestry records dating from 1846 - 1972.

The Royal Manchester Institution Collection (M6)

Contains correspondence with Sir Francis Egerton, later 1st Earl of Ellesmere regarding the loan of items from his collection for various exhibitions.

To R C Sharp, Mosley Street, 7 April 1836 Regarding Lord Egerton's offer made for the Exhibition of the drawings by the Carracci. M6/1/49/2/p. 107

To Lord Francis Egerton MP, London, 4 May 1836

Enquiring when the Council of the Royal Manchester Institution may expect to receive the drawings for the Exhibition.

M6/1/49/2/p. 117

To Lord Francis Egerton MP, London, 6 July 1836

Regarding the close of the Exhibition of the drawings loaned by his Lordship.

M6/1/49/2/p. 121

To Lord Francis Egerton MP, 25 July 1836 Informing him that the drawings have been forwarded to his address in London.

M6/1/49/2/p. 123

To Lord Francis Egerton MP, Bridgewater House, 24 March 1838 Regarding his offer of the loan of some works of the Old Masters for an Exhibition.

M6/1/49/2/p. 146

To Peter Rasbotham of London, 13 January 1852

Acknowledging receipt of money for two pictures purchased at the Exhibition by the Earl of Ellesmere.

M6/1/49/5/p. 314

From Lord Francis, London, 17 April 1836 Regarding the transportation of drawings from the collection of Sir T Lawrence to Manchester, for the Exhibition. Proposes to send 123 drawings by the three Carracci and Guilio Romano and advises on how they should be hung.

M6/1/51/124

From Lord Francis Egerton, London, 6 May 1836

Informing the secretary that the drawings have been forwarded to the Royal Manchester Institution but there will be fewer than anticipated and limited to the Carracci.

M6/1/51/125

From Lord Francis, Bridgewater House, 10 March 1838
Enquiring when the latest point at which the pictures are to be received before the Old Masters Exhibition opens and suggests he may be able to contribute some small works. M6/1/51/128

From R W Rathsotham, Bridgewater House, 31 March 1838
Informing the secretary that Lord Francis has been ordered to Bath by his physician and regrets he cannot complete the arrangements to send a portion of his collection for the Old Masters Exhibition. M6/1/51/129

'Registers of Owners'.
Identifies the paintings owned by Francis Egerton, 1st Earl of Ellesmere and loaned to the Institution for the Art Treasures Exhibition, 1857. M6/2/21/1-2

C. W. Provis and Sons., of Manchester, auctioneers and valuers (M106).

This collection contains two boxes of annotated sales particulars and correspondence relating to the Earl of Ellesmere's estates, dating 1914-1921. Note that catalogues for the sale of furniture and books from Worsley New Hall are held in the Mullineux Collection at Salford City Archives. M106/25-26

Local Studies Collection: Green Box Newspaper Cuttings Collection: A-Z Halls, Box 92

Has a small number of articles from the Manchester City News and the Journal of Horticulture and Cottage Gardener.

2.7 Northampton Record Office

Wootton Hall Park, Northampton, NN4 8BQ
t: 01604 762129
e: archivist@northamptonshire.gov.uk

Holds correspondence of Lord Francis Egerton, 1st Earl of Ellesmere, dated 1837 – 1856, as part of the **Ellesmere (Brackley) Collection, E(B)**. The Brackley Estate in Northamptonshire was granted to the Egerton family in the sixteenth century, and Sir Francis inherited it along with the Lancashire and Cheshire estates from the Duke of Bridgewater in 1833. When Sir Francis was elevated to the Peerage as Earl of Ellesmere in 1846, he was simultaneously granted the subsidiary title of Viscount Brackley. Although the Ellesmere (Brackley) Collection contains some records relating to Worsley and the Bridgewater Canal, the bulk of the material is dated before the nineteenth century and there is no mention of the New Hall itself. However, the collection does contain bundles of Lord Francis's correspondence written during the period when the New Hall was being designed and built:

Letters regarding the administration and management of the Bridgewater estates. E(B) 1496

Includes a letter from James Sothern to Lord Francis Egerton, 30 May 1837 stating he intends to leave Worsley Hall (the Brick Hall) two months early. E(B) 1496/19

Bundles of correspondence from churches, charities, literary institutions and schools and begging letters from individuals. E(B) 1497, 1498 and 1500

2.8 The Royal Archives

Round Tower, Windsor Castle, Windsor, Berkshire, SL4 1NJ

Holds various correspondences relating to the New Hall:

Letter from Queen Victoria to Harriet Sutherland-Leveson-Gower, Duchess of Sutherland.

Refers to Queen Victoria's visit to Worsley in 1851, Lord Ellesmere's character and Lord Brackley's health.

VIC/ADD A24/303

Letter from Lord Escher to Sir Francis Knollys.

Regarding the 1909 Review at Worsley and the "'military spirit" of the nation'.

VIC/MAIN/W141/93

2.9 RIBA Library Drawings and Archives Collection

RIBA Architecture Study Rooms, Victoria and Albert Museum, Cromwell Road, London, SW7 2RL

t: 020 7307 3708

e: drawings&archives@riba.org

The Collections contain over 400 of Edward Blore's plans for Worsley New Hall along with his Account Books.

Working drawings for Worsley Hall, Lancashire as well as Parsonage House, Schools and Cottages, and 'Bridgewater Trust Offices', by Edward Blore.

Two large volumes of drawings.

The numbers and titles listed on the next pages refer to those found on the drawings, and any inconsistencies in the sequence adhere to the numbering system used on the original documents.

Vol/26

- | | | |
|---|---|---|
| 1 Basement Plan | 26 Section through the Cap of Pier to Gateway for Garden | 49 North Elevation of Offices and Two Sections |
| 2 Ground Plan | 27 Elevations of Square Window South Front | 49a Plan of the Ground Showing Levels |
| 3 Chamber Plan | 28 Plan of Entrance Hall | 50 Elevation of South Window to Kitchen Offices |
| 4 Upper Chamber Plan | 29 Two Sections of Screen North Front | 51 Details of Offices, Arches and Elevations |
| 5 Attic Plan | 30 Elevation and Sections of Arcade North Front | 52 Elevation of Part of Offices North Front |
| 6 North Elevation | 31 Elevation of South Front of Kitchen Offices | 53 Elevation of Door to Dairy South Elevation of Offices |
| 7 South Elevation | 32 Longitudinal Section through Kitchen Offices | 54 Chimneys to Offices |
| 8 West Elevation | 33 Section through Gardener's Cottage | 55 Section of Octagon Buttress at the Angles of Gables |
| 9 East Elevation | 34 Cast Iron Girders for Ground Floor | 55a Outside Elevation to Centre Window North Front |
| 10 Section through AB | 35 Plan of Offices | 56 Elevation of Front of Housekeeper's Room |
| 11 Section through CD | 36 Sections through Office | 57 Elevation of One Arch to End of Terrace |
| 12 Ground Plan of Offices | 37 Worsley Hall Details of Masonry of Arcade | 58 Section of Blocks Supporting Windows over Housekeeper's Room |
| 13 Plans of the Bow Windows | 38 Outside Elevation of Octagon Bow Window to Drawing Room and Lord Francis' Room | 59 Ornament at Top of Bow Window Housekeeper's Room |
| 14 Angle Jamb to Square Window South Front | 39 Arches at the End of the Terrace South Front | 60 Elevation of the End of the Entrance Hall |
| 15 Details of Masonry | 40 Side Elevation of Arches at End of Terrace South Front | 61 Elevation of the Side and End of Entrance Hall |
| 16 Shutters in Side Jamb to Square Window South Front | 41 Oriel Windows North Front | 62 Cornice to Octagon Bow Window to Drawing Room and Lord Francis' Room |
| 17 Angle Jamb to Octagon Bow Window South Front | 42 Details of Corbel and Oriel Window South Front | 63 Panels in Centre Windows North Front |
| 18 Elevation and Profile to Four Light Window of Drawing Room | 43 Plan of Staircase | 64 Plan of Principal Staircase |
| 19 Four Light Window in Drawing Room | 44 Plan of Entrance Hall | 65 Principle Staircase |
| 20 Three Light Windows | 45 Elevations of Sides of Entrance Hall | 66 Plans and Elevation of Additions to East Elevation |
| 21 Sashes and Shutters in Jambs of Three Light Windows | 46 Ground Plan of Offices | 67 Top of Tower and Angle Turrets |
| 22 Section through Drawing Room Three Light Window | 47 Upper Plan of Offices | 68 Worsley Hall Panel under Gable |
| 23 Plan and Section of Five Light Window in Morning Room | 48 South Elevation of Offices Showing Alterations | 69 Plan Elevation and Section of Chimneys through Building |
| 24 Gateway to Garden | | |
| 25 Elevation of Keystone to Gateway | | |

-
- | | | |
|--|--|--|
| 70 Elevation of Attic Windows and Parapet | 95 Top of Angle Turret North Front | 116 Details of Pilasters to Entrance Carriage Way |
| 71 Cornice to Main Building | 96 Finial to Octagon Angle Turrets of Gables | 117 Panel over Pilaster for Entrance Door North Front |
| 72 Section through Parapet and Details | 97 Parapets to Additional Building East Side | 118 Spandrel between Arches of Screen |
| 73 Plan and Elevation of Chimneys | 98 Scroll Ornament on Top of Octagon Window South Front | 119 Elevation of Balustrades to Screen North Front |
| 74 Corbel supporting the Chimneys at the Angle of Square Bow to Dining Room with Details | 99 Scroll Work over Cant of Octagon Window South Front | 120 Plan and Section of Proposed Terrace |
| 75 Turret to Centre of South Front and Details | 100 Angle Standard (Finial) to Octagon Window South Front | 121 Panel under the Angle Turret of Large Tower |
| 76 Angle Standards to Square Windows South, East and West Fronts | 101 Elevation of Turret containing Kitchen Flues | 122 Panel under Window in Small Tower |
| 77 Window in the Gable over Square Window South Front | 102 Detail to Top of Turret containing Kitchen Flues | 123 Panel over Entrance Door |
| 78 Detail of Angle Turrets of Centre Window North Front | 103 Details to Top of Tower containing Kitchen Flues | 124 Elevation of Chimneys to Brew House and Details |
| 79 Truss to Window in Gable over Centre Window North Front | 104 Details to Turret containing Kitchen Flues | 125 Scroll Work at the Top of Small Tower |
| 80 Finial to Gable of Centre Window North Front | 105 Details to Top of Tower containing Kitchen Flues | 126 Elevation of the Top of the Angle (small) Tower South Front |
| 81 Doors to Chamber Floor | 106 Scroll Work over Oriel Windows North Front | 127 Tops of Turrets for the Large Tower |
| 82 Plan of Bow Windows and Shutters Chamber Floor South Front. Details of Shutters in Angle Jamb | 107 Scroll Work over Oriel Windows North Front | 128 Plan and Sections of Dairy |
| 83 Plan of Three Light Window and Square Bow showing Shutters Chamber Floor | 108 Finial to Top of Oriel Windows North Front | 129 Elevation of the Lower Part of Dairy with Details |
| 84 Details of Three Light Window in Large Tower | 110 Cornice to Upper Chamber Floor | 130 Section through Dairy |
| 85 Details of Window at Top of Angle Tower | 111 Open Arches in Wall between Gardener's House and Garden | 131 Elevation of Upper Parts of Dairy with Details |
| 86 Finial to Head of Window at Top of Angle Tower | 112 Bracket under Cornice in Large Tower | 132 Parapet to Octagon Dairy |
| 87 Cornice to Tower | 113 Elevation of Scroll Work to Tower containing Kitchen Flues | 133 Coping, Cornice and C. to Octagon Dairy |
| 88 Section through the Coping and Parapet of Large Tower | 114 Elevation of Entrance Door | 134 Panel to Octagon Dairy |
| 89 Baluster to Parapet of Large Tower | 115 Moldings to the Panels over Entrance Door | 135 Angle Standard to Octagon Dairy |
| 90 Cap and Base of Pilasters and Cornice to Angle Turret of Large Tower | | 136 Details of Turret containing Kitchen Flues |
| | | 137 Doors and Skirting to Private Rooms on Ground Floor with Details |
| | | 138 Cornice and Architrave for Private Rooms on Ground Floor |
-

-
- | | | |
|--|--|---|
| 139 Turret for Brew House and Details | 162 Details of Cornice for Greenhouse | 186 Ceiling of Morning Room |
| 140 Scroll Work for Arcade West Front | 163 Cornice and Finial for Greenhouse | 187 Cornice for the Ceiling of the Morning Room |
| 141 Elevation of Part of Screen West Front | 164 Butler's Pantry | 188 Ornaments for the Cove for Morning Room Ceiling |
| 142 Finial at the Angle of Arcade West Front with Details | 165 Plate Safe | 189 Flower for Ceiling of Morning Room |
| 143 Details to Arcade (screen) West Front | 166 Still Room | 190 Elevation for Sides of Dining Room Showing Dado Panelling |
| 144 Carriage Entrance North Front | 167 Store Room | 191 Door for Dining Room |
| 145 Panel in Cupola over Carriage Entrance | 168 Common Store Room | 192 Upper Panels for Door in Dining Room |
| 146 Clock Face in Cupola over Carriage Entrance | 169 Housekeeper's Room | 193 Architrave and Head of Door in Dining Room |
| 147 Panel under Windows in Porch to Carriage Front | 170 Gardens Arches | 194 Dado Panelling for the Sides of the Dining Room |
| 148 Details of Cupola over Carriage Entrance | 170a Arches in Gardens West Elevation | 195 Elevations of the Sides of the Morning Room |
| 149 Angle Standard for Carriage Entrance with Details | 171 Elevation and Section of Terrace Wall | 196 Elevation of Single Door for the Morning Room |
| 150 Panels over the Side Arches Carriage Entrance | 172 Terrace Elevation of Balustrade | 197 Folding Doors for Morning Room |
| 151 Door and Window for inside Porch Carriage (principle) Entrance | 173 Terrace Wall | 198 Panels for Doors of Morning Room |
| 152 Plan and Elevation of Cupola for Carriage Entrance | 174 Base of Retaining Wall of Terrace | 199 Recess for Sideboard in Dining Room |
| 153 Plan of the Pier of the Angle of Arcade Entrance Porch North Front | 175 Chimney in Garden | 200 Brackets for the Recess for Sideboard in Dining Room |
| 154 Detail of Scroll Ornament and Finial for Lantern over Entrance Porch | 176 Chimney in Garden | 201 Finial for Door and over Pilasters for Recess at the End of Dining Room |
| 155 Lantern for Carriage Entrance Porch | 177 Details of Chimney in Garden | 202 Panels under Windows of Dining Room |
| 156 Pilasters at the Angles of Octagon Lantern over the Entrance Porch | 178a Engine House in Garden | 203 Folding Doors in Drawing Room |
| 157 Plan of Terraces | 178b Engine House in Garden | 204 Scrollwork Ornament on the Top of the Folding Doors Drawing Room |
| 158 Elevation of Terraces | 178c Engine House in Garden | 205 Doors for Drawing Room |
| 159 Greenhouse in Garden | 178d Engine House in Garden | 206 Scrollwork Ornament on the Top of the Single Doors Drawing Room |
| 160 Greenhouse in Garden | 178e Engine House in Garden | 207 Architrave for Doors in Drawing Room |
| 161 Details of Roof in Greenhouse | 178f Engine House in Garden | 208 Panels for Drawing Room Doors |
| | 179 Dining Room Ceiling | 209 Panels under Windows in Drawing Room |
| | 180 Cornice for Dining Room | |
| | 181 Ribs & C. for Ceiling in the Dining Room | |
| | 182 Ceiling of Drawing Room | |
| | 183 Cornice for Drawing Room | |
| | 184 Panels in the Cove for the Ceiling of the Drawing Room | |
| | 185 Flower for Ceiling of Drawing Room | |
-

-
- 210 Base Molding to Drawing Room
- 211 Ceiling for Principle Staircase
- 212 Plan of Piers and Moldings for Arches Upper Part of Principle Staircase
- 213 Rib and Cornice for Ceiling Principle Staircase
- 214 Details of Arches at the Upper Part of the Principle Staircase
- 215 Details of Morning Room Panels under Window
- 216 Head of Single Doors for Morning Room
- 217 Cap of Folding Doors for Morning Room
- 218 Blocks in Arch of the Recess of the Dining Room
- 219 Ceiling in Lady Francis' Room
- Vol/35**
- 220 Part of the Ceiling from Lady Francis' Room
- 221 Cornice in Lady Francis' Room
- 222 Door in Entrance Hall communicating with Morning Room
- 223 Details of Door in Entrance Hall communicating with the Morning Room
- 224 Head of Door in Entrance Hall communicating with Morning Room
- 225 Ceiling in Lord Francis' Room
- 226 Part of the Ceiling in Lord Francis' Room
- 227 Cornice in Lord Francis' Room
- 228 Plan and Elevation of the Chimney under the End Window in Drawing Room
- 229 Ceiling for Entrance Hall
- 230 Trusses in Cornice for the Entrance Hall
- 231 Angle ornament to the Ceiling in Entrance Hall
- 232 Panels in Ceiling of Entrance Hall
- 233 Pilasters in Entrance Hall
- 234 Recesses on either side of the Bow Window in Drawing Room
- 235 Details of Arches for Recesses on either side of the Bow Window for Drawing Room
- 236 Arches for the Upper Part of the Principle Stairs
- 237 Screen and Doors in Principle Staircase
- 238 Handrail String and Soffit Moldings for Principle Staircase
- 239 Newel & Pendant for Principle Staircase
- 240 Panels over Centre Arch of Screen at the Foot of the Principle Staircase
- 241 Piers, Archivolt and Keystone for Arches in Entrance Hall and Screen at the Foot of the Principle Stairs
- 242 Section thro Principle Stairs
- 243 Section thro Principle Stairs
- 244 Balustrading for Principle Staircase
- 245 Elevation of Arches at East End of Entrance Hall
- 246 Details of Pilasters in Entrance Hall
- 247 Elevation of Niches in Entrance Hall
- 248 Brackets over Pilasters in Entrance Hall
- 249 Head of Door to Drawing Room on the Staircase Side
- 250 Ornaments to the Caps of Pilasters in the Entrance Hall
- 251 Spandrels for Arches in Entrance Hall
- 252 Panels in Frieze of Cornice for Entrance Hall
- 253 Ceiling for Porch
- 254 Pendant for Morning Room Ceiling
- 255 Plan of Pendant for Morning Room
- 256 Circular Pendant for Drawing Room Ceiling
- 257 Ceiling under the Landing of Principal Staircase
- 258 Pendant for Principal Staircase
- 259 Ceiling for Lobby between Entrance Hall and Private Apartments
- 260 Outline of the Pendant for Entrance Hall as Pointed out by Mr Blore from the Pendant of Principal Staircase Merevale Hall
- 261 Picture Frame for Entrance Hall
- 262 Dining Room Chimney Piece
- 263 Base of Pilasters for Dining Room Chimney Piece
- 264 Profile of Trusses and Pilasters for Dining Room Chimney Piece
- 265 Details of Dining Room Chimney Piece
- 266 Trusses and Pilasters for Dining Room Chimney Piece
- 267 Bracket on the Upper Part of Centre Window North Front
- 268 Merevale Hall Screen in Front of Back Staircase
- 268 Elevation of Glass Door for Entrance Hall
- 269 Details for External Entrance Door
- 270 Details of Glass Door Entrance Hall
- 271 Newel at the Foot of the Stairs
- 272 Trusses under Suffix in Entrance Hall
- 273 Balustrades and Rail for Second Staircase
- 274 Stairs of Terraces
- 275 Initials in Panel over Dining Room Doors
-

-
- | | | |
|---|---|--|
| 276 Chimney Piece for Drawing Room | 299 Elevation of Bell Turret | 321 Details of Engine House |
| 277 Jamb to Chimney Piece of Drawing Room | 300 Details of Bell Turret | 322 Door to Museum |
| 280 Pendant for Drawing Room | 301 Details of Bell Turret | 323 Cornice for Morning Room Window |
| 282 Part of Kitchen Court showing Coal Yard | 302 Plan of Morning Room showing the Bookcases | 324 Cornice to Drawing Room Window |
| 283 Elevation of the Upper Part of Screen next Staircase | 303 Elevation of Bookcase for Morning Room | 325 Cornice for Square Window in Dining Room |
| 284 Piers to Garden Gate | 304 Elevation of Bookcase in Morning Room Fireplace and Window Side | 326 Cornice to Dining Room Window |
| 285 Ground Plan of Stables | 305 Details of Bookcases in Morning Room Cornices and Moldings | 327 Cornice to Morning Room Window |
| 286 Upper Part of the Stables | 306 Arms for the Centre Panel of Entrance Porch | 328 Entrance Hall Chimney Piece Glass Frame |
| 287 Elevations and Sections of Stables | 307 Panel over Entrance in Carriage Entrance North Front | 329 Elevation of Chimney Piece for Entrance Hall |
| 288 Elevations and Sections of Stables | 308 Panel over Octagon Bow Window South Front | 330 Chimney Piece to Entrance Hall full size |
| 289 Plan of Room on First Chamber Floor over the Entrance Hall showing the Arrangement of the Bookcases | 309 Panel in Parapet of Large Tower | 333 Section thro Stairs from 1st to 2nd Chamber Floor |
| 290 Elevation of Bookcases on East Side of Room on First Floor over the Entrance Hall | 310 Panel in Large Tower | 334 Ceiling to Principle Staircase |
| 291 Elevation of Bookcases on West side of Room on First Floor over the Entrance Hall | 311 Arms for Centre Panel in Entrance Porch | 335 Elevation of Side of Carriage Way to Arcade North Front |
| 292 Elevation of Bookcases on North side of Room on First Floor over the Entrance Hall | 312 Panel in the Parapet of Large Tower | 336 Panel over Door of Entrance Porch |
| 293 Elevation of Bookcases on South side of Room on First Floor over the Entrance Hall | 313 Panel in the Parapet of Large Tower | 337 Angle Jamb for Square Bow |
| 294 Details of Bookcases in Room on First Floor over the Entrance Hall | 314 Panel in the Parapet of Large Tower | 338 Top of Door within Arch from Entrance Hall to Private Apartments |
| 295 Chimney Piece in Morning Room | 315 Panel in Scroll Work over Octagon Bow Window on South Front | 339 Section showing Roof over Morning Room Bow Window |
| 296 Details of Chimney Piece in Morning Room | 316 Panel over Octagon Bow Window South Front | 340 Scroll Work to Angle Tower of Large Tower |
| 297 Frieze of Chimney Piece in Morning Room | 317 Panel overarches in Carriage Entrance North Front | 341 Initials for Drawing Room Door |
| 298 Details of Chimney Piece in Morning Room | 318 Panel overarches in Carriage Entrance North Front | 342 Bracket for the Head of Windows in Entrance Hall |
| | 319 Section thro Principle Staircase showing also the Stair to the Basement Floor as Executed | 343 Door Panels for Entrance Hall |
| | 320 Plan, Elevation and Sections of Engine House | 344 Plan of Roof to Kitchen Offices |
| | | 345 Plan and Sections of Part of Roofs of the Offices |
| | | 346 Section of Tower Hall South Side |
| | | 347 Dormer Window to Entrance Offices |
-

-
- | | | |
|---|--|--|
| 348 Elevations of Windows to Offices | 374 Block Plan showing the Area and Depth of Ground to be excavated for the Foundation | 399 Gardener's House Chamber Plan |
| 349 Sketch of Corbel and Arch | 375 Basement Plan | 400 Gardener's House Sections on the Lines A, B and C, D |
| 350 Elevations of Sides of Drawing Room | 376 Ground Plan and Showing Upper Storey of Kitchen Offices | 401 Gardener's House Back and Flank Elevations |
| 351 Panel over Attic Window in Centre of North Front | 377 Chamber Plan | 402 Gardener's House Flank and Front Elevations Hollington stone |
| 352 Sketch for Panel | 378 2nd Chamber Plan | 403 Gardener's House Cornice, Coping and Corbel |
| 353 Sketch for Panel | 379 Attic Plan | 404 Gardener's House Details of Stonework |
| 354 Wood Panels | 380 Elevation of the Walls showing the Flues | 405 Gardener's House Plan and Elevation of Chimneys |
| 355 Wood Panels | 381 Elevation of the Walls showing the Flues | 406 Gardener's House Cornice under Eaves of Octagon |
| 356 Sketch of Old Wood Panels | 382 Elevation of the Walls showing the Flues | 407 Gardener's House Finial to Gables |
| 357 Sketch of Old Wood Panels | 383 Worsley Hall Elevation of the Walls showing the Flues | 408 Roof for Gardener's House |
| 358 Sketch of Old Wood Panels | 384 Worsley Hall Plan and Elevations of Old Stables | 409 Plan of the Drains Gardener's House |
| 359 Sketch of Old Wood Panels | 385 Plan of Old Stables | 410 - 460 Drawings are of Worsley Old Hall, the Parsonage and Bridgewater Trust Offices |
| 360 Panels – Wood | 386 Kitchen Garden Worsley Hall | |
| 361 Plan of Terrace | 387 Plan of Kitchen Gardens | Building accounts kept by Edward Blore |
| 362 Terrace Plain Part from Steps Round End Returns | 388 Elevations of Kitchen Gardens | Includes those for Worsley New Hall. These are detailed, providing a year by year set of accounts of expenditure for materials and labour etc., the names of those employed in the construction of the building and an abstract of the receipts and expenditure. |
| 363 Details of Masonry to Steps in Flower Gardens | 389 Plan and Elevation of the Small Vineries at Worsley Hall Gardens | BIE/1/1-3 |
| 364 Plan and Section of Steps in Flower Garden in South and East Fronts | 390 Plan and Sections of Vinery | |
| 365 Plan and Sections of Terraces | 391 Ground Plan of Greenhouses Large Vineries with Sections | |
| 366 Plan of Terraces and Mr Lock's Plan of Road | 392 Plan and Elevation of Greenhouses | |
| 367 Sketch of Chimney Piece | 393 Plan and Elevation of Peach Houses | |
| 368 Sketch of Chimney Piece | 394 Plan of Kitchen Gardens | |
| 369 Plan showing Engine House and Road along North Front of Offices | 395 Heating Appliances for Vineries | |
| 370 Mr Price's Plan and Sections for Bathroom | 396 Plan and Section of Melon Pits | |
| 371 Proposed Plan of Stables | 397 Plan and Section of Hot Houses | |
| 372 Plan of Terraces and Slopes | 398 Gardener's House Ground Plan | |
| 373 Plan of Terraces and Gardens | | |
-

2.10 Salford City Archives and Local History Library

Salford Museum and Art Gallery, Peel Park,
The Crescent, Salford, M5 4WT
t: 0161 778 0810
e: roseanne.mclaughlin2@salford.gov.uk

BW Bridgewater Estates Collection.

These papers form part of the estate records of the Lancashire and Cheshire Estates of the Dukes of Bridgewater, Earls of Ellesmere and Bridgewater Estates Ltd from the 1720s to the 1980s. The collection gives a unique insight into the social and industrial history of Worsley and surrounding areas in the period, and is primarily that of the estate rather than the personal papers of the Earls of Ellesmere.

The full catalogue is available on Access to Archives (A2A) www.nationalarchives.gov.uk/A2A/. The items listed here relate directly to Worsley New Hall.

Minute Books

Nine volumes with indexes, containing decision minutes from Directors' Meetings, 1923 - 1975, regarding the New Hall. The volumes provide information on various offers to purchase the building and grounds and its demolition; tenancies of the Bothy, Worsley New Hall Gardens and lodges; damage by mining operations; Worsley New Hall Stables; shooting rights in the grounds; sale of the generating station; lease by the Boy Scout Association and plans for a new hotel.

BW/A/1/2-10

Staff Lists

Dated 1900 - 1920, these are small printed booklets listing staff employed on the Earl of Ellesmere's Lancashire and Cheshire Estates and Collieries and include the roles of head gardener, house carpenter and head gamekeeper at Worsley New Hall.

BW/A/5/1-16

Records relating to the buying and selling of property

Notes on The Wardley and Worsley Estate, undated [1908?]. Refers to an agreement, 21 February 1861 with the London and North Western Railway Company regarding supply of water to Worsley New Hall from Blackleach and other reservoirs.

BW/A/7/1/13

Register containing details of sale of land, hereditaments etc. twentieth century
Contains information regarding the sale of land in Worsley New Hall grounds to the War Department, 1956.

BW/A/7/2/51

Papers relating to the valuation of Worsley New Hall 1920 - 1921

Contains two bundles of detailed handwritten and typed notes surveying the contents of the building. Includes details regarding materials & fittings; servant's quarters; roof timber; slating; structural valuation; and a room-by-room inventory of the Hall interior.

BW/A/7/3/19

Household records

This consists of six items containing inventories of the furniture, goods and linen in Worsley Hall, dated 1796 - 1823. These items relate to the Brick Hall and provide information about the rooms and contents of the building.

BW/A/11/1-5

Salford City Archives also holds the **Mullineux Collection U332**, which contains ephemera, newspaper cuttings and other records relating to the New Hall, collected by local historians Frank and Elsie Mullineux. See section 2.3 Chetham's Library for **The Mullineux Photographic Collection**.

Items relating to the New Hall are:

Letter dated 20 May 1968 from G. Waterhouse, Belfast to Frank Molyneux [sic], regarding his grandfather, John Jackson's reminiscences of Queen Victoria's visit to Worsley in 1851 written down by his aunt.

U332/C1/10

'Worsley and its part in the War 1914-1918'. One folder containing photographs of Corporal Reading and other servicemen in Worsley New Hall Hospital and letters regarding the arrangements for the Christmas Meal, and newspaper cuttings on Reading's articles about the Hospital for the Daily Despatch.

U332/O4

Funeral cards for the 1st Earl of Ellesmere, Lord Francis Egerton, 1857.

U332/Z210

Invitation from the Earl of Ellesmere and his wife to Mr and Mrs Westbrook, 12 Walkden Road, Walkden, for an outdoor fete at the New Hall, 28 August 1886.

U332/Z237

'At Home' cards for garden parties at the New Hall, 31 August 1904 and 5 September 1912.

U332/Z238 and U332/Z239

Cardboard print of an engraving by Henry Cleaver of the entrance to the New Hall.

U332/Z273

C. W. Provis and Sons Auctioneers catalogue Worsley New Hall, Worsley, 'Catalogue of the remaining portion of the contents', April 1921. One volume, 44 pages. Belonged to Miss Birkby, Longley Road, Worsley.

U332/Z276

C. W. Provis and Sons Auctioneers catalogue of the Library 1921. One volume, 16 pages. Belonged to Miss Birkby, Longley Road, Worsley.
U332/Z277

Transcript of extracts from the journal of the brewer, Joseph Buxton, with references to Worsley Hall.
U332/Z375

Cover with an illustration of the Worsley New Hall from the sheet music 'The Ellesmere Polka', composed by Heinrich Blumer for Queen Victoria's visit to Worsley in 1851.
U332/Z715

Ticket for admission to the ground near the coke oven and timber yard (Pink area) for Queen Victoria's visit to Worsley, 1851.
U332/Z716-17

Ticket for admission to the steps in front of the Packet House (Blue Area) for Queen Victoria's visit to Worsley, 1851.
U332/Z718

Card for admission to the coal yard for Queen Victoria's visit to Worsley, 1851.
U332/Z719

Souvenir pamphlet for King Edward VII's Review at Worsley, 1909.
U332/Z742

Printed leaflet advising on access to the ground for King Edward VII's Review, 1909.
U332/Z744

Printed programme for the Worsley Victory Carnival, 20 and 27 September, 1919.
U332/Z780

Ticket for the Worsley Victory Carnival held in the grounds of the New Hall, 20 and 27 September, 1919.
U332/Z786

Printed programme, for the concert held on behalf of Worsley Red Cross Hospital, Worsley New Hall. Held at the Town Hall, Walkden, Saturday 23 January 1915.
U332/Z788

'The Worsley Wail (Being the Unofficial Chronicle of the Worsley Red Cross Hospital, Lancashire)' Four volumes, September - October 1916.
U332/Z795-99

Folder 'Worsley Wars Special (Great War)' containing newspaper cuttings in reference to the Worsley New Hall Hospital, 1914 -1916.
U332/Z800

Folder 'Worsley Men at the War' contains news cuttings on Worsley and the First World War, 1914 - 1916. Cuttings refer to Worsley New Hall Hospital, death of the Lodge Keeper's son and Lady Ellesmere.
U332/Z801

Printed plan, prepared in connection with Queen Victoria's visit, showing the Bridgewater Canal from Patricroft to Worsley. Lithographed by George Falkner, King Street Manchester, 1851.

Sheet three shows the location of the landing stage in relation to the New Hall and Bridgewater Hotel.
U332/M64

Map printed to show the location of the Worsley Pageant Ground near the New Hall, 1914.
U332/M65

Bridging the Years: Canal Archive Photographs

T1629 7501 Worsley New Hall view from SW corner, c. 1900

T1631 7382 Worsley Old Hall, c. 1900

T1630 7504 Worsley New Hall from across the lake south of the Hall, c. 1900

Salford Local History Library's Photograph and Images Collection

contains a large number of photographs and images relating the New Hall. The Library also has a number of local newspapers on microfilm which contained articles relating to the New Hall and Bridgewater Estates from the nineteenth to the twenty-first century. These include:

Eccles Journal
Eccles and Patricroft Journal
Farnworth Journal
Salford Advertiser
Swinton and Pendlebury Journal

2.11 Staffordshire Record Office

Staffordshire Record Office, Eastgate Street, Stafford, ST16 2LZ
t: 01785-278379
e: staffordshire.record.office@staffordshire.gov.uk

Holds the records of the Sutherland-Leveson-Gower family, Dukes of Sutherland, Earls Gower, etc. (the Sutherland Papers), including other records of the Trentham Estate. Lord Francis Egerton, 1st Earl of Ellesmere was the second son of George Leveson-Gower, 1st Duke of Sutherland. The collection contains:

Yearly statements of receipts and payments made on account of the Duke of Sutherland by Drummonds and Childs, 1834 - 1842.

Financial accounts and living costs for Lord Francis Egerton. Provides details for living expenditure, including butchers, milkman, grocer etc., coal merchant; general repairs; medical attendance; gardens; fine arts; stables; for Lord Francis Egerton's Worsley, London and Oatlands houses. Also includes information about the expenses paid to Edward Blore for Worsley New Hall buildings from 1839 - 1842.
D593/N/1/2/1/3

Letters from Francis, 1st Earl of Ellesmere to his brother George, 2nd Duke of Sutherland.

These are organised into five bundles in chronological order: 1823 - 1833; 1834 - 1835; 1836 - 1850; 1839 - 1840; 1843 - 1845. Large parts of the correspondence deal with Lord Francis' travels in Europe and politics.

D593/P/22/1/5

A small number of letters refer directly to Worsley New Hall:

Worsley, 15 June 1845

Regarding Lord Francis' establishment in the new house at Worsley; comments on the interior workmanship; the servant's bells; windows and armorial bearings on the exterior. Notes that 'there are divers faults of interior from which the next house I build in the country will be exempt, but they are in general as much mine as of the architect.'

Worsley, 25 December 1845

Sir Francis suggests to his brother that he should 'drop into' the New Hall on his way south and describes its advantages. He mentions that 'the terraces and kitchen gardens, however wet the country at large, afford a dry quarter deck to walk out. The house is warm and coals cheap. Trentham and Lilleshall at a stone's throw. Ask the Duke of Devonshire if it is not all fine. He has taken to the place mightily.'

February 1850

Mentions that half the chimneys have been blown down during the recent gales.

2.12 The University of Salford Archives and Special Collections

Clifford Whitworth Library, The Library, The University of Salford, The Crescent, Salford, M5 4WT

t: 0161 295 6650

e: I.Johnston@salford.ac.uk

BEA Bridgewater Estates Archive.

A large collection of correspondence relating to the administration of Bridgewater Estates. This collection offers the most comprehensive source of information for Worsley New Hall at the end of the nineteenth and early twentieth century. Although most of the material consists primarily of correspondence, other items are included such as plans and official documentation.

The full catalogue can be found at:

www.library.salford.ac.uk/resources/special/bridgewater.xml

Worsley New Hall

Correspondence dating from 1898 - 1959 regarding applications to visit the New Hall grounds and gardens; requests for flowers, Christmas trees and evergreen from the New Hall Gardens; installation and maintenance of electric lighting and lift; billiards equipment; art collection; maintenance and repairs to the Hall, grounds, gates, lodges and garden buildings; drainage and water supply; fetes and garden parties; Worsley Hall Hospital; trespassers and the theft of garden produce; tenancies of the lodges and Market Gardens, Bothy and Garden Cottage; 2/8th Battalion of the Lancashire Fusiliers; 42nd and 45th Battalion of the Home Guard; bridge over Leigh Road; sale and demolition of the Hall; requisitioning of land and property by the War Office and compensation claims; Middlewood as a Scout camp; Reinforced Concrete Building (bunker).

Information found in:

BEA/I/1228

BEA/II/1594

BEA/II/A112

BEA/IV/C20

Employment

Correspondence dating from 1904 - 1911 regarding employment: Thomas Mitchell, former gardener; vacancy for the 'deaf and dumb' boy, Hodgkinson, in the gardens; John Bradshaw and Mary Bowley of Worsley New Hall; Albert Green, gardener; Robert, 2nd Keeper at Worsley New Hall; Gerald Askew, foreman at the New Hall Gardens and W. B. Upjohn, head gardener.

BEA/I/7

Situations and testimonials

Correspondence dating from 1912 - 1913 and 1917 - 1918 regarding the employment of Gerald D. Askew, foreman at Worsley New Hall Gardens; Mary S. Jones, dairymaid at Worsley New Hall; Hilda Martin for a vacancy at Worsley New Hall as a gardener.

BEA/II/A7

Insurance and Investments – Lord Ellesmere's Property

Correspondence regarding the insurance policy for Worsley New Hall, including a valuation of furniture.

BEA/II/A130

The University also holds the **DBA Duke of Bridgewater Archive** which consists of items relating to the family history of the Egertons, the acquisition of land and the building of the Bridgewater Canal and underground mines at Worsley. It also contains material relating to the Duke's Dock at Liverpool, and to the Bridgewater Trust.

The manuscript material includes letters from the 2nd Duke of Bridgewater to his sisters in the 1730s and the 3rd Duke's correspondence during his Grand Tour in 1753. The collection also includes books, journal articles and ephemera relating to the canal, and contains the drafts of unpublished family chronicles compiled by Strachan Holme, who was the librarian at Bridgewater House, the London seat of the Egerton family and Earls of Ellesmere, during the 1920s.

2.13 Private collections

Peel Holdings (Management) Ltd.,

Peel Dome, The Trafford Centre,
Manchester, M17 8PL
t: 0161 629 8200

Holds material relating to the New Hall including:

A book of original floor plans

Conveyances and leases

Plan of the deviation of Leigh Road

Demolition contract with Sydney Littler,
dated 15 September 1944
Plan of water pipes from Blackleach Reservoir

Plan of new carriage drive on Ordnance
Survey base

Contact Peel Holdings (Management)
regarding access.

Nesfield Archive, Australia

Papers include Nesfield's reminiscences, correspondence, portfolio of drawings and watercolours, plans and plantings for estates, maps and reports containing recommendations and criticisms. Records relating to Worsley New Hall are not extensive but include:

Ground Plan of Planting of Mound, 13
November 1845.

Report on Proposed Deviation of Public Road
and Letter to Mr Lock, 2 May 1846. This
document corresponds to the plan held by
Peel Holdings (Management) Ltd.

For more detailed information on the
Nesfield Archives see the PhD thesis by
Shirley Evans listed in section 5.

3. Selected newspaper and journal articles

Appleby, T. 'The New Flower Garden at Worsley Hall', *The Cottage Gardener and Country Gentleman*, 29 March 1859, p. 400.

A description of the garden and includes a plan of one of the terraces and an accompanying list and key of the plants.

Appleby, T. 'Worsley Hall', *The Journal of Horticulture*, 4 March 1861, pp. 454-455.

Baines, T. 'Worsley Hall: Seat of the Earl of Ellesmere', *The Gardeners Chronicle*, 17 July 1875, pp. 70-71.

A detailed description of the gardens and plantings. Mentions a cherry tree which marked the spot of the former Brick Hall, and the Valdosine fountain from the 1851 Exhibition. A sketch of the New Hall, viewed from the lake can be found on p. 77.

Curtis, C. H. 'Worsley New Hall, the Seat of the Earl of Ellesmere', *The Gardener's Magazine*, 24 August 1895, pp. 531-538.

A supplement to the magazine about the Hall and grounds. Illustrated with images and photographs of the grounds, the Earl of Ellesmere and Mr W. B. Upjohn.

Douglas, J. 'Worsley Hall', *The Journal of Horticulture*, 7 September 1876, pp. 214-216.

A description of the kitchen gardens includes an illustration of the New Hall.

Douglas, J. 'Worsley Hall: The Flower Garden and Pleasure Grounds', *The Journal of Horticulture*, 14 September 1876, pp. 237-239.

A description of the terrace gardens and parkland includes a plan and key of one of the parterres. Mentions the *Wellingtonia Gigantea* planted by Queen Victoria.

'From Mansion to Council Houses', *Hebden Bridge Times and Gazette*, 16 July 1948, p. 3.

A report on the use of stone from the New Hall in the construction of houses at Southfield, Heptonstall.

'Garden Party at Worsley Hall', *The City Lantern*, 13 August 1880, p. 373.

Brief article regarding a garden party held by the Earl and Countess of Ellesmere at Worsley New Hall and includes a list of invited guests.

'Her Majesty's Visit to Manchester' and 'Worsley Hall', *Illustrated Times*, 4 July 1857, p. 7.

An illustration of the Hall can be found on p. 12.

Oldham, C. 'Famous Gardens: Worsley Hall', *The Journal of Horticulture*, 30 April 1914, pp. 401-404.

A description of the terraced gardens, kitchen gardens and grounds, with images.

'Ornamental Iron Gates and Piers', *The Builder*, 10 December 1853, p. 750.

Includes an image of the gates.

'Presentation of the Worsley Address to Her Majesty', *Illustrated London News*, 25 October 1851, pp. 517-518. Provides an account of the presentation and includes an illustration of the scene outside the New Hall.

'Queen Victoria's Visit to Lancashire', *Supplement to the Illustrated London News*, 18 October 1851, pp. 473-486.

Contains a detailed account of the Queen's visit to Worsley, including illustrations of her arrival by barge from Patricroft Station and the Landing Stage.

'Retirement of Mr W. B. Upjohn', *The Gardeners Chronicle*, 1 December 1923.

R. E., 'Garden Memoranda: Worsley Hall, the seat of the Earl of Ellesmere, late Lord Francis Egerton', *The Gardener's Chronicle*, 1846, p. 867.

A description of the Hall and kitchen gardens, and mentions recent and forthcoming alterations to the parkland.

'The colours of the 3rd Earl of Ellesmere', *The Badminton Magazine*, May 1910, pp. 475-488.

Francis Charles Granville Egerton, 3rd Earl of Ellesmere had an interest in horse-racing and was a successful breeder of shire horses. He owned a stud at Worsley and at Stetchworth Park, Newmarket.

'The Royal Visit', *Eccles Advertiser*, 9 September 1909.

A detailed account of the visit to Worsley by Edward VII and Queen Alexandra.

'Worsley Hall, near Manchester', *The Builder*, 8 June 1850.

Includes a ground-floor plan of the New Hall.

'Worsley Hall, Manchester, the seat of the Earl of Ellesmere', *Country Life*, 20 July 1901, pp. 80-85.

A detailed feature on the New Hall, with photographs of the Hall, terraced gardens and walks, croquet lawn, fountain and lake.

'Worsley Hall', *Manchester Faces and Places* 11, no. 1, (1900), p. 134.

Provides a brief description of the location of the Hall in the surrounding area, biographical details for Francis Charles Granville Egerton, 3rd Earl of Ellesmere and a sketch of the New Hall, south-west view.

4. Books and pamphlets

Primary material

Axon, William E. A. *The Annals of Manchester: A Chronological Record from the Earliest Times to the End of 1885*. Manchester: John Heywood, 1886.

A yearly account of events in Manchester. Refers to Lord Francis Egerton, Worsley New Hall, and Queen Victoria's visits in 1851 and 1857.

A Guide to Worsley. Historical and Topographical. Eccles: Advertiser Office, reprinted 1914.

Description of the New Hall and grounds and includes a sketch of the Hall on the back cover.

Brookes, C. A. *The Gardens of England*. London: T. McLean, 1857.

Contains a description and illustration of the gardens.

East Lancashire Branch British Red Cross Society, *An Illustrated Account of the Work of the Branch during the First Year of the War*. Manchester: Sherratt and Hughes, 1916.

Description and brief account of the Hospital during its first two years of operation can be found pp. 52-56. Includes lists of resident, visiting and nursing staff and a photographic print of the staff.

Handbook for Lancashire. London: John Murray, 1880. Revised ed., with map.

Refers to the New Hall and its collection of paintings including Landseer's 'Return from Hawking'.

Hindshaw, William. *Eccles and Worsley: Historical and Descriptive including Explorations in the Subterranean Canal*. Salford: Steam Printing Co., 1875. Contains a detailed description of the New Hall and particularly the gardens.

Mitchell, Reuben. *Photographic Views in Bolton and the Neighbourhood*. Bolton: Old Post Office, Bradshawgate, 1868. Includes an illustration of the New Hall.

Morris, Francis Orpen. *The Country Seats of the Noblemen and Gentlemen of Great Britain and Ireland*. Vol. 2. London: Longmans, Green & Co., 1866. Contains a colour illustration of the New Hall.

Personal Reminiscences of the Duke of Wellington by Francis, the first Earl of Ellesmere, edited with a Memoir of Lord Ellesmere by his Daughter, Alice, Countess of Stafford. London: John Murray, 1903. Includes an account of the Duke's visit to Worsley with Queen Victoria in 1851.

Worsley village and Halls, the Egerton family and Bridgewater Estates

Aldred, John. *Worsley: An Historical Geography, 1200 - 1850, From Contemporary Maps and Records*. Worsley: Worsley Civic Trust, 1988.

Brownhill, J. and William Farrer (eds.) *The Victoria History of the County of Lancaster*. Vol. 4. London: Constables, 1911. Section on Worsley and the New Hall, pp. 376-383.

Catford, Nick. *Subterranean Britain: Cold War Bunkers*. Bradford on Avon: Folly Books Ltd, 2010.

Photographs and information on the Worsley bunker, pp. 123-124.

Coult, Douglas. *A Prospect of Ashridge*. London: Phillimore, 1980. Provides information about the Egerton family. Ashridge was the Hertfordshire seat of the 3rd Duke of Bridgewater and had been in the Egerton family since the beginning of the seventeenth century. In 1832 the Bridgewater Monument was erected in the grounds to the 3rd Duke in recognition of his pioneering canal development. He is buried nearby at Little Gaddesden Church.

Culpin, Robin. *Worsley and the Bridgewater Canal: An Introduction*. Revised ed. Salford: City of Salford Arts & Leisure, 1996.

Falk, Bernard. *The Bridgewater Millions: A Candid Family History*. London: Hutchinson, 1942.

A history of the Egerton family, particularly informative on Lord Francis Egerton, 1st Earl of Ellesmere.

Grayling, Christopher. *The Bridgewater Heritage: The Story of the Bridgewater Estates*. Manchester: Bridgewater Estates PLC, 1983.

Hardman, Ken R. *A New Appreciation of the Halls of Worsley (Boothstown Local History Society Booklet No. 2)*. Worsley: LP Print Design, 1996.

Section on 'Worsley New Hall and Gardens' provides basic information on the history and site of the New Hall, including the various lodge houses.

Hart-Davis, Henry Vaughan. *A Short History of Worsley, together with an Account of the Worsley Pageant, June 17th & 20th 1914*. Reprint. Streetgate Publications, 1991.

Littlejohn, David. *The Fate of the English Country House*. Oxford: Oxford University Press, 1997.

Makes reference to Worsley New Hall, p. 32 in the context that it was built for members of the 'old aristocracy' in contrast to new money.

Mather, F. C. *After the Canal Duke: A Study of the Industrial Estates Administered by the Trustees of the Third Duke of Bridgewater in the Age of Railway Building, 1825-1872*. Oxford: Oxford University Press, 1970.

Monaghan, Anne. *Old Worsley and Little Hulton Revisited*. Salford: City of Salford, 1996.

Contains selected photographs of the New Hall, fountain and gates.

Mullineux, C. Elsie. *Halls of the Manor of Worsley*. Streetgate Printing & Stationery, 1989.

Provides a brief history in the section 'Worsley New Hall'.

Mullineux, Frank. *The Duke of Bridgewater's Canal*. 2nd ed. Eccles: Eccles and District History Society, 1988.

Pratt, Ian. S. *Workedslegh: A History of Worsley*. Worsley: I. S. Pratt, 1977.

Pevsner, Nikolaus. *The Buildings of England: Lancashire*. Vol. 1, *The Industrial and Commercial South*. Harmondsworth: Penguin Books Ltd, 1969.

Walker, J. S. F. and M. Tindall. *Country Houses of Greater Manchester*. Manchester: Greater Manchester Archaeological Unit, 1985.

A study on the building type, using archaeological excavation, documentary research and survey. Provides some historical background on the development of country houses and a Gazetteer of country houses in Greater Manchester, including Worsley New Hall, p. 147.

Wilson, Richard and Alan Mackley. *Creating Paradise: The Building of the English Country House, 1660-1880*. London: Hambledon and London, 2000.

A study of the building of the country house, exploring the influences of power and culture and the building process. Worsley Hall is mentioned briefly on p. 61, in relation to the other grand houses built by the Bridgewaters, Sutherlands and Staffords as 'models of luxury and comfort'.

Wood, Cyril J. *The Duke's Cut: The Bridgewater Canal*. Stroud: Tempus Publishing Limited, 2002.

Worsley, Giles. *England's Lost Houses: From the Archives of Country Life*. London: Aurum, 2011.

Compilation of photographs of country houses which were demolished and fell into disrepair during the twentieth century. Worsley places the decline of these houses into the historical context of social and political change. Worsley New Hall is mentioned with an accompanying photograph of the exterior on pp. 12-13.

Edward Blore, architect

Blore provided illustrations for a number of topographical and antiquarian works including:

Bliss, Philip. *The Monumental Remains of Noble and Eminent Persons: Comprising the Sepulchral Antiquities of Great Britain*. London: Harding, Lepard and Co., 1826.

Engraved from drawings by Edward Blore with historical and bibliographical illustrations.

Blore, Thomas. *The History and Antiquities of the County of Rutland*. Stanford: R. Newcomb & Son, 1811.

Blore assisted his father in the production of this book by drawing architectural illustrations.

Britton, John. *Cathedral Antiquities: Historical and Descriptive Accounts*. London: M. A. Nattali, 1836.

Five volumes containing 311 illustrations of the following English cathedrals: Canterbury, York, Salisbury, Norwich, Oxford, Winchester, Lichfield, Hereford, Wells, Exeter, Worcester, Peterborough, Gloucester, and Bristol.

Britton, John. *The History and Antiquities of the Metropolitan Church of York: Illustrated by a series of Engravings, of Views, Elevations, Plans and Details of the Architecture of that Edifice with Biographical Anecdotes of the Archbishops*. London, 1819.

Contains 16 plates by Blore.

Hall, James. *Essay on the Origin, History and Principles of Gothic Architecture*. London: 1813.

Lacunar Strevelinense: A Collection of Heads, Etched and Engraved after the Carved Works which formerly decorated the roof of the King's Room in Stirling Castle. Edinburgh: William Blackwood and London: John Murray, 1817.

Engravings are based on originals by Edward Blore.

Scott, Sir Walter. *The Provincial Antiquities and Picturesque Scenery of Scotland*. Two vols. London: Rodwell and Martin, 1819-1826.

Seyer, Samuel. *Memoirs Historical and Topographical of Bristol and its Neighbourhood: From its Earliest Period down to its Present Time*. Two volumes with plates by Edward Blore and others. London: Rodwell and Martin, 1821.

There are no detailed studies or monographs on the architect and his works to date. The following texts provide an introduction and overview of his career:

Colvin, Howard. *A Biographical Dictionary of British Architects, 1600-1840*. 3rd ed., pp. 115-118. London: Yale University Press, 1995.

Girouard, Mark. *The Victorian County House*. Revised and enlarged ed. London: Yale University Press, 1979.

Includes a case study of Merevale Hall.

Hitchcock, Henry Russell. *Early Victorian Architecture*. Vol. 1, Text. London: The Architectural Press, 1954.

The entry for Blore can be found on pp. 229-230.

William Andrews Nesfield, landscape gardener.

The PhD theses at section 5 provide further in-depth study on Nesfield's work.

Evans, Shirley. *Nesfield's Monster Work: The Gardens of Witley Court*. P. Huxtable Designs: 1994.

Ridgway, Christopher (ed.) *William Andrews Nesfield: Victorian Landscape Architect Papers form the Bicentenary Conference, The King's Manor, York*. York: University of York Institute of Advanced Architectural Studies, 1996.

Ridgeway, Christopher. 'William Andrews Nesfield: Between Uvedale Price and Isambard Kingdom Brunel', *Journal of Garden History* 13, (1993), pp. 69-89.

Examines Nesfield's work at Castle Howard, Stoke Edith, Eaton Hall and Crewe Hall.

Tooley, Michael John (ed.) *William Andrews Nesfield 1794-1881: Essays to Mark the Bicentenary of his Birth*. Witton-le-Wear, Durham: Michaelmas Books: 1994.

Tooley, Michael John. *William Andrews Nesfield 1794-1881: an Exhibition Guide, Bicentenary Exhibition University Library, Palace Green, Durham, 6 August – 23 September, Witton-le-Wear*. Durham: Michaelmas Books: 1994.

Bradley Hole, Kathryn. *The Lost Gardens of England: From the Archives of Country Life*. London: Aurum, 2004.

5. Theses

James-Fowler, Nina Gibbs. 'Landscape into Architecture: William Andrews Nesfield and William Eden Nesfield' PhD Thesis, Royal Holloway and Bedford New College, 1997.

An analysis of the individual styles and parallels between William Andrews Nesfield and his son, William Eden.

Evans, Shirley. 'William Andrews Nesfield (1794 - 1881): Artist and Landscape Gardener' PhD Thesis, two volumes. University College, Falmouth, 2007.

An in-depth analysis of Nesfield, his garden layouts and their significance for his wealthy patrons. Vol. 2 includes a brief analysis of Nesfield's design principles, and four appendices of his landscape design commissions; plans, reports, recommendations and criticisms; planting schemes; watercolours and drawings.

6. Web resources

Links and information on these web resources were correct when accessed on 25 October 2012.

Biodiversity Heritage Library

www.biodiversitylibrary.org/bibliography/8343#

Provides open access to the Journal of Horticulture, Cottage Gardener and Country Gentleman from Vol. 1 April 1861 to Vol. 35 December 1878 (new series).

Britain From Above

www.britainfromabove.org.uk/

The aerofilms collection includes two aerial photographs taken of Worsley New Hall and grounds, dated 10 July 1927. The images show the building, terraces and steps up to Leigh Road. Users need to register (free) to zoom images.

Image references: EPW018824; EPW018825

The British Newspaper Archive

www.britishnewspaperarchive.co.uk

A searchable database of digitised historical newspapers from the British Library's newspaper collections. Although the search function is free, users must purchase a package to download and view the images. It includes articles referring to Worsley New Hall from the Manchester Courier and Lancashire General Advertiser; Manchester Evening News; Essex Standard; Sussex Advertiser; York Herald; Morning Post; London Daily News; Derby Mercury; The Ipswich Journal; Nottingham Evening Post and London Standard amongst others.

Country Life Picture Library

www.countrylifeimages.co.uk/

Searchable online collection of images of houses and gardens commissioned for the magazine since its inception in the late nineteenth century. Includes one image

of Worsley New Hall, showing a view of the exterior from the south over the lake (L2679). Publication date 1901.

Family History Records

www.findmypast.co.uk and www.ancestry.co.uk

These sites offer access to Census returns (1841-1911) for the New Hall, lodges, Gardener's Cottage and Bothy as well as military service records for employees and residents. Find My Past operates through a person search; Ancestry offers the additional options for place search and life events. Access is by subscription only, but often available at participating libraries and local studies centres.

History of Worsley

www.colsal.org.uk/sites/historyofworsley/Homepage.asp

This website provides an introduction to the history of Worsley and includes a section on the New Hall, as well as the Brick Hall and Old Hall.

Lost Heritage

www.lostheritage.org.uk

Lists significant country houses that have been demolished or left as ruins. Contains four black and white photographic prints of Worsley New Hall.

Manchester Guardian (1821-2000) and the Observer (1791-2000)

Available through subscription at participating libraries. Contains various articles dating from 1851-1944, including Queen Victoria's visits in 1851 and 1857; fire at Worsley Hall 1857; visit by the Prince and

Princess of Wales 1869; Duke of York and the Royal Agricultural Show 1897; the 1909 Royal Review; Worsley New Hall Hospital; the Bridgewater Trust 1904; Bridgewater Estates Ltd 1923; Worsley Pageant 1914; deaths of the Dowager Countess of Ellesmere and Lord Ellesmere.

Manchester Local Image Collection

images.manchester.gov.uk/index.php

A free searchable database of images of Manchester and the surrounding area, available to view online.

Images include:

J. J. Alley, Sketch of The Queen's Landing Stage, 1877 Ref: m79697

Drawing of Worsley Hall from Rev. F. O. Morris, Country Seats of Great Britain and Ireland (London, 1866) Vol. 2, n.d. Ref: m80466

Drawing of 'Arrival of Queen Victoria at Worsley', appeared in The Illustrated London News, 1851 Ref: m07216

Drawing of Queen Victoria, Presentation at Worsley Hall from The Illustrated London News, 1851 Ref: m07225

Shaw, I. and Greenwood, C. J. Sketch of the south-east façade of Worsley Hall, Lancashire, 1828 Ref: m67554 (N.B: The date attributed to this drawing is likely to be incorrect).

T. Allom, Drawing of the Brick Hall, viewed from the Bridgewater Canal, 1833 Ref: m6755

National Portrait Gallery

www.npg.org.uk/

Collections include portraits of:

Sir Edward Blore (1787 - 1879). Chalk drawing by George Koberwein, 1868.

Lord Francis Egerton, 1st Earl of Ellesmere (1800 - 1857). Watercolour painting by John Linnell (1820); an oil painting by Edwin Longsdon Long; lithographic prints, engravings and a marble bust by Matthew Noble (c. 1858).

Harriet Catherine (nee Greville), Countess of Ellesmere (1800 - 1866), wife of 1st Earl of Ellesmere. Photographic portrait, date and creator unknown.

Charles Granville Egerton, 3rd Earl of Ellesmere (1847 - 1914) and John Francis Granville Scrope Egerton, 4th Earl of Ellesmere (1872 - 1944), glass negatives by Alexander Bassano c. 1899 and 1909-1933.

Mary Louisa (nee Campbell), Countess of Ellesmere (1825 - 1913), wife of George Egerton, 2nd Earl of Ellesmere. Stippled engraving after George Richmond, 1850s - 1860s.

Oxford Dictionary of National Biography

www.oxforddnb.com/

Access is by subscription only. Includes biographical entries for:

G. C. Boase, rev. H. C. G. Matthew, 'Egerton [formerly Leveson-Gower], Francis, first Earl of Ellesmere (1800 - 1857), politician and poet'.

Thomas Seccombe. Rev. Huon Mallalieu, 'Nesfield, William Andrews (bap. 1794, d. 1881), watercolour painter and landscape gardener'.

M. H. Port, 'Blore, Edward (1787 - 1879), antiquarian artist and architect'.

Queen Victoria's Journals

www.queenvictoriasjournals.org

A free, searchable database of digitised pages from the surviving volumes of Queen Victoria's diaries. All the references to the Queen's visits to Worsley are found in Princess Beatrice's copies, abridged versions of the original diaries which were later destroyed.

1851 visit

Thursday 9 October: Arrival of the Royal Party at Worsley and first evening at the Hall, including a brief description of the house and the work of James Nasmyth.

Place of writing: Worsley New Hall

RAVIC/MAIN/QVJ (W) 9 OCTOBER 1851 (Princess Beatrice's copies)

Friday 10 October: Journey through Salford and Manchester; address at Peel Park and the Manchester Exchange; spent the afternoon in Worsley and watched an electric light display on the terraces.

Place of writing: Worsley New Hall

RAVIC/MAIN/QVJ (W) 10 OCTOBER 1851 (Princess Beatrice's copies)

Saturday 11 October: Departure from Worsley; the Queen presents an address to Lord Ellesmere's schoolchildren and local clergy in the Hall; the Royal Party travels by barge from the Hall to Patricroft Station.

Place of writing: Windsor Castle

RAVIC/MAIN/QVJ (W) 11 OCTOBER 1851 (Princess Beatrice's copies)

1857 visit

Monday 29 June: Arrival of the Royal Party at Worsley; occupied same rooms as in 1851.

Place of writing: Worsley New Hall

RAVIC/MAIN/QVJ (W) 29 June 1857 (Princess Beatrice's copies)

Tuesday 30 June: Visit to the Manchester Art Treasures Exhibition; return to Worsley for dinner and ill health of Lord Ellesmere.

Place of writing: Worsley New Hall

RAVIC/MAIN/QVJ (W) 30 June 1857 (Princess Beatrice's copies)

Wednesday 1 July: Second visit to the Exhibition; walking and driving with Lady Ellesmere, first planting trees.

Place of writing: Worsley New Hall

RAVIC/MAIN/QVJ (W) 1 July 1857 (Princess Beatrice's copies)

RIBApix

www.ribapix.com/

Free searchable database of images from the collections of the British Architectural Library at the Royal Institute of British Architects.

Contains one image of Worsley New Hall, a colour print of a drawing of the exterior of the building by the artist, George Moore (c. 1776 - 1859) dated 1840s.

Title: Worsley New Hall, near Manchester, seat of the Earl of Ellesmere: perspective view of the house and grounds with stonemasons shown constructing garden terracing.

Image reference: RIBA32100

Transport Archive

www.transportarchive.org.uk/

Searchable database of images telling the story of Britain's transport system since the eighteenth century. Includes the following images relating to Worsley New Hall:

T2149 Engraving of the Brick Hall viewed from the Bridgewater Canal, 1833

T2862 Colour photograph of the Worsley Boathouse on the Bridgewater Canal, 2003

T1629 Black and white photographic print of the New Hall, view from the south west corner, c. 1900

T1630 Black and white photographic print of the New Hall, view from across the lake south of the Hall, c. 1900

T1638 Front cover of the Ellesmere Polka sheet music, with an illustration of the New Hall

T1656 Black and white photographic print of the landing stage built on the bank of the Bridgewater Canal for the reception of Queen Victoria in 1851, date unknown

T1658 Black and white photographic print of the Royal Barge, built for Queen Victoria's visit in 1851, moored on the north bank of the Bridgewater Canal, c. 1890

T1701 Ticket for spectator at visit of Queen Victoria to Worsley, 1851

T1702 Reverse of ticket for spectator at visits of Queen Victoria to Worsley, 1851, showing the area where the ticket owner could view the Queen's arrival

These photographic prints and images are from Salford Local History Library and Salford City Archives.

University of Salford Archive Repository

usir.salford.ac.uk/archives/

Worsley New Hall Collection includes digitised samples of records from the Bridgewater Estates Archive at the University of Salford; the Mullineux Collection at Salford City Archives; Edward Blore's Working Drawings of Worsley New Hall, RIBA as well as oral history recordings (WNH Oral History 1-6) and photographs of Worsley New Hall Hospital and employees, loaned by the public.

Oral history recordings:

WNH Oral History 1 Joy Openshaw.

Regarding connections to the Egerton family; going inside the Hall during WW2; elocution lessons at the Lodge; anti-aircraft guns in Middlewood.

WNH Oral History 2 Arthur Gordon. Recalls going inside the Hall; playing in the grounds; American troops; Leigh Road Bridge.

WNH Oral History 3 Ruth Campbell. Recalls her grandfather William Barber Upjohn; the Bothy; playing in the grounds; Lady Rochdale; Dick Edge; collecting post from the fire-engine house; family's departure from the Gardener's Cottage following Upjohn's death.

WNH Oral History 4 Anne Martins and Bert Kidd. Recall Worsley New Hall Market Gardens and the Hall grounds in the 1940s. Anne lived in the Bothy and Bert was employed as a gardener.

WNH Oral History 5 Terence Flaherty recalls being stationed at the bunker during National Service.

WNH Oral History 6 Glen Atkinson recalls the development of Middlewood Scout Camp from the 1950s to the 1980s.

Further information about the landscape architect William Andrews Nesfield and his projects can be found on a number of sites:

Royal Botanic Gardens, Kew

www.kew.org/

This site has information about the architect William Andrews Nesfield in the 'History & Heritage' section, including a biographic overview and his design of the arboretum at Kew during the 1840s.

Great British Garden Designers

www.greatbritishgardens.co.uk/william_andrews_nesfield.htm

This has some brief information about Nesfield.

The Garden and Landscape Guide

www.gardenvisit.com/

Contains brief biographical details and entries for Nesfield's gardens and influence at: Blicking Hall; Bodrhyddan Hall; Castle Howard; Coombe Country Park; Holkham Hall; Wroxton Abbey; Somerleyton Hall and Rode Hall.

7. Archaeological reports

Nash, Vicky; Matt Bishop, Charlotte Vallance and Mike Nevell. Archaeological Building Survey: The Kitchen Garden, Worsley Hall Garden Centre, Worsley. Report No: 09/2012. University of Salford, 2012.

Nash, Vicky; Matt Bishop and Mike Nevell. Archaeological Building Survey: The Garden Cottage, Worsley Hall Garden Centre, Worsley. Report No: 07/2012. University of Salford, 2012.

Nash, Vicky; Matt Bishop and Mike Nevell. Archaeological Building Survey: The Bothy, Worsley Hall Garden Centre, Worsley. Report No: 08/2012. University of Salford, 2012.

Nash, Vicky; Matt Bishop and Mike Nevell. Archaeological Building Survey: The Gates Grotto and Ice House, Worsley New Hall. Report No: 14/2012. University of Salford, 2012.

Nash, Vicky, and Mike Nevell. Archaeological Building Survey: The Stables, Worsley Hall Garden Centre, Worsley. Report No: 131/2011. University of Salford, 2012.

Nash, Vicky, and Mike Nevell. Archaeological Desk-Based Assessment: Worsley New Hall, Worsley, Greater Manchester. Report No: 29/2011. University of Salford, 2012.

Nevell, Mike and Charlotte Vallance. Archaeological Building Survey: Worsley New Hall Cold War Bunker, Worsley. Report No: 02/2012. University of Salford, 2012.

Nevell, Mike; Charlotte Vallance, Brian Grimsditch and Adam Thompson. Worsley New Hall Excavations Final Report. Report No: 21/2012. University of Salford, 2012.

Notes

University of Salford
The Library
Clifford Whitworth
M5 4WT

t: +44 (0)161 295 5535
e: library@salford.ac.uk

www.salford.ac.uk/library

