



University of  
**Salford**  
MANCHESTER

# Analysis of the mitochondrial maxicircle of *Trypanosoma lewisi*, a neglected human pathogen

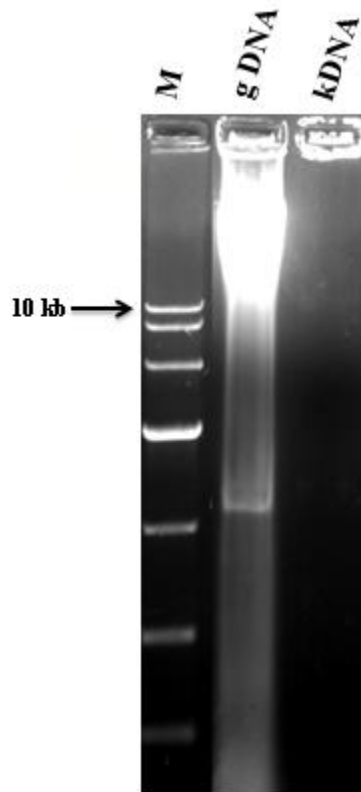
Lin, R, Lai, D, Zheng, L, Wu, J, Lukeš, J, Hide, G and Lun, Z

<http://dx.doi.org/10.1186/s13071-015-1281-8>

<b>Title</b>	Analysis of the mitochondrial maxicircle of <i>Trypanosoma lewisi</i> , a neglected human pathogen
<b>Authors</b>	Lin, R, Lai, D, Zheng, L, Wu, J, Lukeš, J, Hide, G and Lun, Z
<b>Type</b>	Article
<b>URL</b>	This version is available at: <a href="http://usir.salford.ac.uk/id/eprint/37694/">http://usir.salford.ac.uk/id/eprint/37694/</a>
<b>Published Date</b>	2015

USIR is a digital collection of the research output of the University of Salford. Where copyright permits, full text material held in the repository is made freely available online and can be read, downloaded and copied for non-commercial private study or research purposes. Please check the manuscript for any further copyright restrictions.

For more information, including our policy and submission procedure, please contact the Repository Team at: [usir@salford.ac.uk](mailto:usir@salford.ac.uk).



**Additional file 1: Figure S1.**

**Genome DNA and kinetoplast DNA preparations from *T. lewisi* were resolved on a 1% agarose gel.** Lanes: M, Molecular marker DL10000 (TaKaRa, Dalian, China); gDNA, genome DNA; kDNA, kinetoplast DNA.