



University of
Salford
MANCHESTER

A profiled structure with improved low frequency absorption.

Wu, T, Cox, TJ and Lam, YW

<http://dx.doi.org/10.1121/1.1412443>

Title	A profiled structure with improved low frequency absorption.
Authors	Wu, T, Cox, TJ and Lam, YW
Publication title	The Journal of the Acoustical Society of America (JASA)
Publisher	Acoustical Society of America
Type	Article
USIR URL	This version is available at: http://usir.salford.ac.uk/id/eprint/429/
Published Date	2006

USIR is a digital collection of the research output of the University of Salford. Where copyright permits, full text material held in the repository is made freely available online and can be read, downloaded and copied for non-commercial private study or research purposes. Please check the manuscript for any further copyright restrictions.

For more information, including our policy and submission procedure, please contact the Repository Team at: library-research@salford.ac.uk.

A profiled structure with improved low frequency absorption

Tao Wu, Trevor J. Cox,^{a)} and Y. W. Lam

School of Acoustics and Electronic Engineering, University of Salford, Salford M5 4WT, United Kingdom

(Received 26 June 2001; accepted for publication 17 August 2001)

It is possible to obtain good absorption from Schroeder diffusers if suitable alterations to the design are made. Interestingly, previous work has shown that good absorption appears possible below the design frequency when the diffusers are poorly constructed. This has inspired the design of a profiled absorber using perforated plates in some wells; the absorber has extended bass response. The paper presents a theory for the enhanced absorption and the important design parameters are discussed. Good agreement is shown between the prediction model and impedance tube measurements. The design of this absorber was first carried out using a numerical optimization, although a simplified design procedure is also outlined which is almost as good. The results clearly show that this type of profiled absorber extends the absorption at low frequencies while maintaining the good absorption at mid frequencies as well. © 2001 Acoustical Society of America. [DOI: 10.1121/1.1412443]

PACS numbers: 43.55.Ev, 43.55.Dt [JDQ]

I. INTRODUCTION

Schroeder diffusers have been widely used in concert halls, theatres, and studio control rooms.¹ There is evidence, however, of significant absorption when the diffusers are poorly designed.² Kuttruff,³ Mechel,⁴ Fujiwara *et al.*,⁵ and Wu *et al.*⁶ theoretically and practically investigated the absorption mechanism. Kuttruff presented the concept of additional air flow between the wells as the source of the excess absorption, although he could not obtain a prediction model which explained the high absorption measured by others. Mechel thoroughly discussed the absorption effect for the near field as well as the directivity for the far field, although his studies lacked direct experimental verification. Furthermore, Mechel indicated the possibility of a low-frequency band absorber by bending the wells, and using the primitive root rather than the quadratic residue sequence to gain better absorption. Wu *et al.* brought together measurement and prediction to provide proper evidence that the strong coupling between the wells is responsible for the high absorption. This was used to develop a new profiled absorber by arranging the depths of wells in one period properly using numerical optimization.

High absorption at low frequencies is the most difficult to achieve from these profiled devices, consequently, the challenge tackled in this paper is to get more absorption bandwidth from a given length. Interestingly, in the paper by Fujiwara,⁵ it was reported that poorly constructed structures could provide high absorption below the lowest resonant frequency. It is speculated that this additional absorption came from cracks in the well bottoms forming Helmholtz resonators with air cavities behind. This inspired the idea that using perforated plates in some wells could significantly extend the absorption range towards the lower frequencies by adding mass to the system and so lowering the resonant frequency.

While the research presented here was in progress, Fujiwara⁷ published a paper which contained measurement

results on a structure with Helmholtz resonators in the wells, i.e., using a similar technique to add mass and to get better absorption in a low frequency range. Fujiwara presented no verified prediction model or design methodology for these structures; it appears the design was formed by trial and error. What is new in the paper below is a prediction model validated against measurement; a more complete understanding of the effects of the different elements in the absorber, and analytical design methodologies which will be used to get the best possible absorption from this structure.

First, the prediction model is presented including the effect of a perforated plate at different positions in the well. The simplest constant length structure with perforated plates in the wells has been optimized to obtain better absorption without any resistant layer on the top. However, as will be shown, this structure cannot provide wide frequency band absorption. It is essential to include different depth wells to get wide frequency range absorption. A numerical optimization is performed to obtain better absorption by adjusting the position of the perforated plates in the wells, and the depths of the wells. The theoretical results have been compared with experimental results, and good agreement achieved. The significant improvement at low frequency range is clearly shown when comparing this kind of absorber with profiled absorber without in-well perforations. The final part of the paper investigates a more straightforward design methodology than numerical optimization. It is shown that by following a couple of simple principles good absorption can be achieved without resorting to numerical optimization.

II. SINGLE WELL MODEL

A. The impedance of a perforated panel

Perforated panels have been used for some years in conjunction with acoustic compliance, and their ability to produce absorption at low frequencies, especially with resistive material, is well known. The perforated plates can be considered as a lattice of short tubes, where the pitch of adjacent tubes is small compared with wavelength of propagating

^{a)}Electronic mail: t.j.cox@salford.ac.uk

sound, but larger than the hole diameter. It is assumed that when sound flows through the holes, there is no motion in the plate itself, and the hole radius is larger than the boundary layer thickness. Then the specific acoustics impedance of the perforated plate is⁸

$$z_p = r_m + j\omega m \quad (1)$$

and

$$r_m = \frac{\rho}{\varepsilon} \sqrt{8\eta\omega} \left(1 + \frac{t}{2a}\right), \quad (2)$$

$$m \approx \frac{\rho}{\varepsilon} \left[t + 2\delta a + \sqrt{\frac{8\eta}{\omega}} \left(1 + \frac{t}{2a}\right) \right], \quad (3)$$

where ρ is the air density, ω is the angular frequency of propagating sound, ε is porosity of the plate, t is the thickness of the plate, a is the radius of the holes, δ is the end correction factor (≈ 0.85), and the last term is due to the boundary layer effect, in which η is the kinematic viscosity of the air ($\approx 15 \times 10^{-6} \text{ m}^2/\text{s}$).

B. The impedance at the entrance of a well

The impedance is needed at the entrance of a well containing a perforated plate and with resistive material at the well entrance. The well width of a profiled absorber is narrow compared with diffusers to provide more absorption, therefore the energy losses caused by viscous and thermal conduction in the wells cannot be neglected. In general, the well width $b \ll \lambda/2$, where λ is the wavelength of the sound, so that only fundamental modes are considered to propagate in each well. The propagation number in the wells is⁹

$$k_t \approx k + \frac{k}{2b} (1-j)[d_v + (\gamma-1)d_h], \quad (4)$$

where $k = \omega/c$, c is the speed of sound. d_v, d_h are the thickness of the viscous and thermal boundary layers, respectively, these can be found from Eq. (5) of Ref. 6. The wells should not be made too narrow, however, because then the resonance(s) would be destroyed. Considering a well length l_n , a perforated plate is fixed at l_{n1} from the opening of well. The impedance on the opening of the well can be derived by the multilayer transfer matrix as

$$z_w = \frac{\rho c z_1 \coth(jk_t l_{n1}) + (\rho c)^2}{z_1 + \rho c \coth(jk_t l_{n1})} + r, \quad (5)$$

where r is the resistivity of the material at the well entrance and z_1 is the total impedance at l_{n1} of a perforated plate and the cavity it covered. z_1 can be calculated by the following equation:

$$z_1 = r_m + j(\omega m - \rho c \cot(k_t(l_n - l_{n1}))). \quad (6)$$

When no perforated plate is used in the well, the entrance impedance simplifies to

$$z_w = r - j\rho c \cot(k_t l_n), \quad (7)$$

where l_n is the depth to the well bottom.

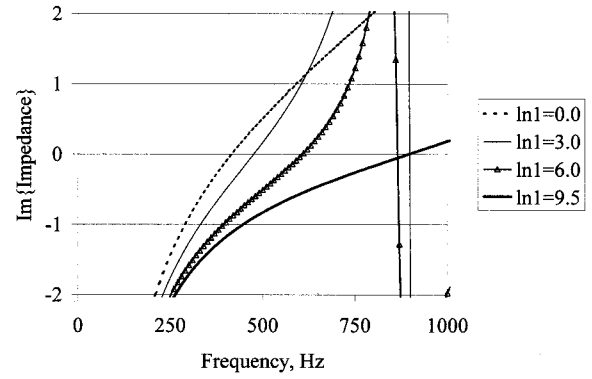


FIG. 1. Comparison of the imaginary part of impedance when moving a perforated plate from bottom to top of a 10 cm well. Distance from top of well to perforated plate, l_{n1} , shown in legend.

C. Effect of perforated plate at different positions in the well

As can be seen from Eqs. (5) and (6), the position of the perforated plate in a well is important for the resonant frequency. Changing the position of perforated plate from bottom to opening in the well, the first resonant frequency of the well is gradually decreased, from the first resonant frequency of the well without perforated plate to the frequency with perforated plate on the top. This gives us a possibility to tune the well by adjusting the positions of the perforated plates. An example is given in Fig. 1, the width of well is 6 mm, length 10 cm, and the parameters of perforated plate are $\varepsilon = 5\%$, $a = 1 \text{ mm}$, $t = 5 \text{ mm}$, the plate's position in the well is $l_{n1} = 9.5 \text{ cm}$, 6.0 cm , 3.0 cm , and 0.0 cm , respectively. The first resonant frequency changes from 900 Hz to 415 Hz as expected. While this change of about an octave enables the wells to be differently tuned, it will be shown later that this is not a sufficient variation and so some wells without perforations are also needed.

III. ABSORPTION BY A PROFILED ABSORBER

A. Theoretical prediction

Profiled absorbers are periodic surface structures with rigid constructions, which consist of wells separated by thin walls. The wells have the same width, but different depths in one period.

The analysis method used in Ref. 6 is still valid for the structure employing perforated plates in wells. The structure is illustrated in Fig. 2. For the one-dimensional absorber, the sound field in front of the absorber is decomposed into the incident plane wave $p_e(x, z)$ and scattered field $p_s(x, z)$ as follows:

$$p(x, z) = p_e(x, z) + p_s(x, z) \quad (8)$$

and

$$p_e(x, z) = P_e e^{j(-xk_x + zk_z)}, \quad (9)$$

$$p_s(x, z) = \sum A_n e^{j(-x\beta_n - z\gamma_n)},$$

where $k_x = k \sin \theta_e$, $k_z = k \cos \theta_e$, and $\beta_n = k_x + n(2\pi/T)$, $\gamma_n = -jk \sqrt{[\sin \theta_e + n(\lambda/T)]^2 - 1}$, T is the width of one period.

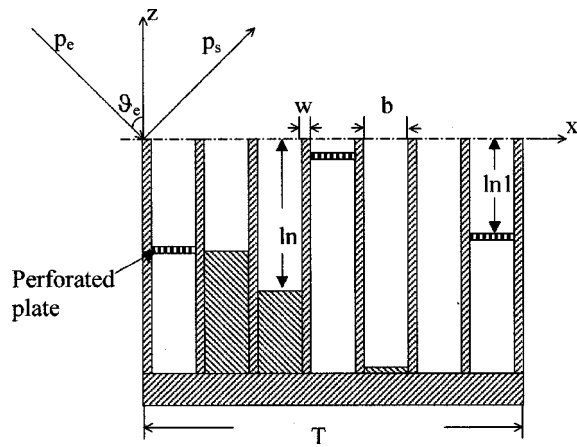


FIG. 2. One period of profiled sound absorber with perforated plates.

The coefficients, A_n , are solved by applying the boundary condition of the periodic impedance on the surface of the absorber.⁶ The absorption coefficient of the absorber is then

$$\alpha(\theta_e) = 1 - \left| \frac{A_0}{P_e} \right|^2 - \frac{1}{\cos \theta_e} \times \sum \left| \frac{A_{n_s}}{P_e} \right|^2 \sqrt{1 - (\sin \theta_e + n_s \lambda / T)^2}. \quad (10)$$

The summation runs over radiating spatial harmonics only.

For normal incident sound and narrow wells, when $\sin \theta_e + \lambda / T \leq 1$, there are only first order reflections, therefore the equivalent normalized impedance on the surface of the structure can be derived from

$$z_e = \frac{1 + A_0 / P_e}{1 - A_0 / P_e}. \quad (11)$$

B. Experimental result

In order to verify the above prediction model, a one-dimensional sample made from aluminum was built inside an impedance tube which had a cross-section size 54×54 mm. The parameters of perforated plate are porosity $\varepsilon = 5.34\%$, $t = 5$ mm, $a = 1$ mm. Because of the impedance tube's size, the sample is limited to seven wells in one period, width of well 6 mm, well separator thickness 1 mm. As we will see later, this construction was optimized for a low frequency profiled absorber, which had a resistive layer on the top of the structure to enhance the losses due to coupling between the wells. Here, it was first measured without the resistive layer to validate the prediction model.

The measurement was carried out in an impedance tube. The procedure was the same as in previous paper,⁶ which is similar to the two microphone standard technique. It is important to remember that in the theoretical predictions the mirror-image effect caused by impedance tube walls has to be included.

For conciseness, the following abbreviations in the normalized impedance graphs will be adopted throughout this paper. The real part of normalized impedance will be R , and the imaginary part X . The comparisons between predictions and measurements of absorption and impedance are shown

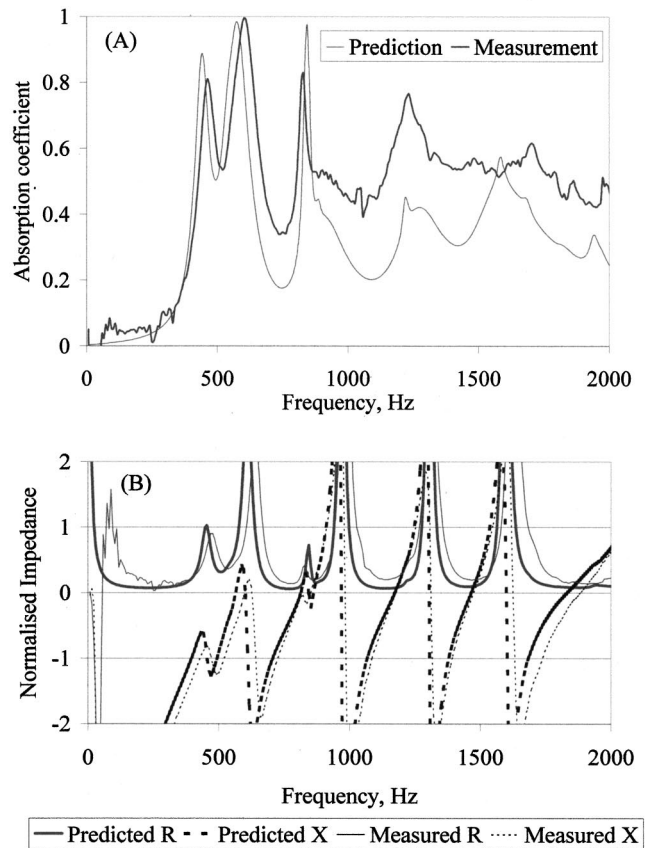


FIG. 3. Comparison of prediction model and experimental results of profiled absorber with perforated plates in some of the wells. (A) Absorption coefficient. (B) impedance.

in Fig. 3. Reasonably good agreement can be seen for the imaginary part of impedance and other parameters in the low frequency part. The slightly higher absorption at middle frequency are likely to be due to unavoidable gaps during the construction and installation of sample. The measurement results demonstrated the validation of prediction model for this kind of structure.

IV. CONSTANT LENGTH ABSORBER WITH PERFORATED PLATES

With a validated prediction model, it is possible to use a trial and error search on a computer, a numerical optimization, to find the best design. The computer can change the absorption by moving the perforated plate in the wells and so tune the resonant frequency. The computer intelligently searches using a downhill simplex method;¹⁰ the goal being to find the absorber with the highest average absorption. A similar technique was used in Ref. 6.

The absorption coefficient and impedance on the surface of structure combining constant length absorber and perforated plates are calculated for two cases: “uniform” construction with the perforated plate on the top of the structure, and “optimized” construction with the optimized structure with perforated plates at different positions in each well. The parameters are for constant length absorber, $N = 7$ wells in one period, $b = 6$ mm, $w = 1$ mm, and well length $l_n = 10$ cm; for the perforated plate, $\varepsilon = 5\%$, $a = 1.0$ mm, t

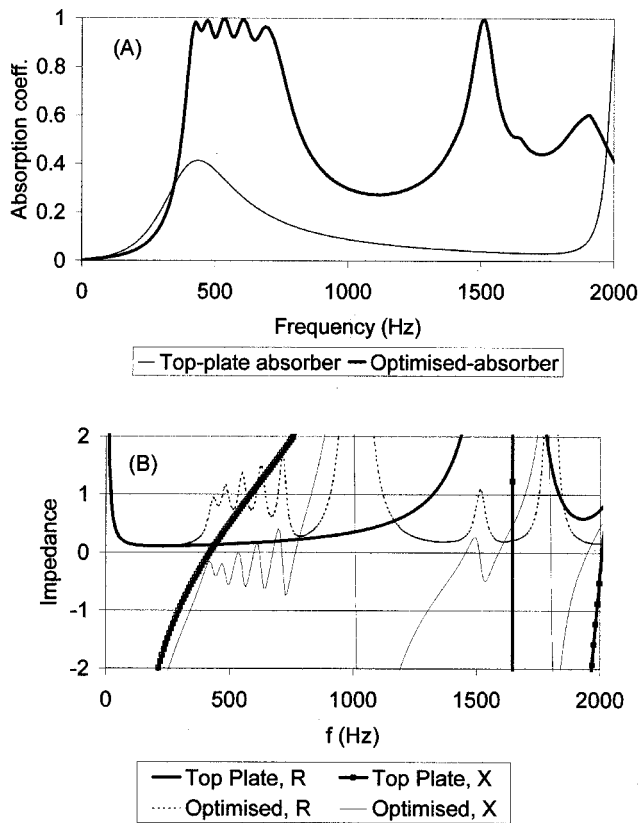


FIG. 4. Comparison between the optimized structure with variable plate position and absorber with plate fixed at the top, (a) absorption coefficient; (b) normalized impedance.

=5 mm. The results are shown in Fig. 4, and position sequence l_{n1} of perforated plates for optimized construction are 3.1, 0.1, 0.0, 7.2, 4.9, 6.2, 8.2 cm.

From Fig. 4(a), it is clearly seen that the absorption of the optimized construction is higher than the construction with the perforated plate on the top across the whole frequency range, and particularly at low frequencies, where the absorption coefficients are nearly 1. Even at the first resonant frequency of the uniform construction, where every well has contributed a resonance at that particular frequency, the absorption is still less than the optimized solution. Looking into the impedance graph Fig. 4(b), the optimized structure created a nonuniform surface impedance that scatters sound. The scattering enhances the coupling between the wells, which provides higher resistance when compared with the uniform construction. Although the absorption at low frequency is high in the optimized absorber, elsewhere is low. This is because the first resonant frequencies have been restricted within a small range, which is from the resonant frequency of structure with the perforated plate on the top to it on the bottom, the coupling in that frequency range is strong, elsewhere is poor. This is the problem alluded to before, where the frequency range of a perforated well could be tuned over what was shown to be only about an octave. This indicates that, in order to widen the frequency band, a variable depth sequence is necessary to provide better coupling over the whole frequency range of interest.

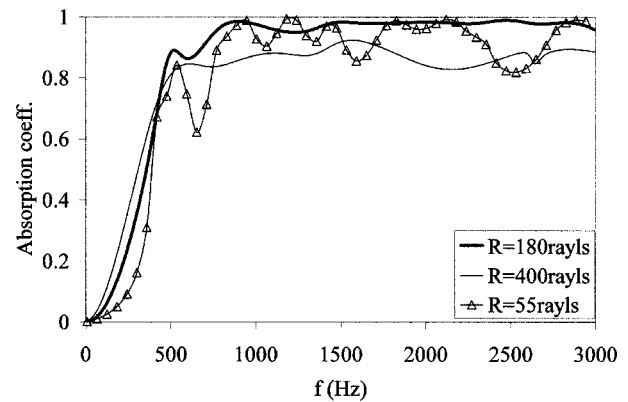


FIG. 5. The effect of the resistivity of the resistive layer on the absorption coefficient of optimized absorbers.

V. WIDEBAND ABSORBER

A. Theoretical discussions

From the investigations of Mechel⁴ and the authors,⁶ a better absorber can be obtained by properly placing the resonant frequencies across the whole frequency range of interest, and applying a proper resistant layer on the top of the structure. In Sec. IV, high absorption at low frequencies had been obtained, however, the frequency bandwidth was narrow. Changing some wells with constant depth to variable depth can solve this problem. At the higher frequency range, optimizing the depth sequence of variable wells is sufficient to obtain well-distributed resonant frequencies without perforated plates. Moreover, the use of perforated plates may cause strong coupling as is shown in Fig. 4(b), which makes it difficult to get uniform high absorption. Consequently, some variable depth wells with no perforated plates are used. The above discussion shows that, by optimizing the positions of perforated plates in the constant depth wells and the depth sequence of variable depth wells, the well-tuned and well-distributed resonant frequencies can be obtained. Great effort is needed to balance the number of constant wells and the number of variable wells in order to get better coupling at the low frequency range as well as high frequency range.

Again, a resistive layer is necessary to smooth the peaks and troughs seen in Fig. 4(a). The resistivity of the resistive layer must be chosen so that the well absorption is high over a reasonable bandwidth, so that the absorption troughs between resonances are removed. Too large a resistivity value, however, would lead to an overly damped system and the peaks of absorption would be significantly lowered. This is illustrated in Fig. 5, where three absorbers with different resistive layers are compared. Each of these absorbers was optimized numerically for best performance. It can be seen that too little resistance (55 Rayls) leads to an uneven performance, too much resistance (400 Rayls) leads to over damping. 180 Rays performs best, and so is used.

The perforated plate's parameters should be chosen carefully. As was seen in the previous paragraph, there is an optimum range of resistance that a well should offer. Consequently, overly small perforations should be avoided, otherwise additional resistive losses in the perforations is likely to detract from the performance.

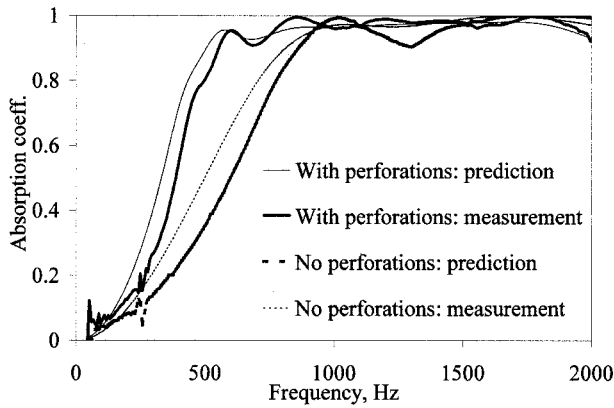


FIG. 6. Comparison of measurement and prediction for two types of absorber.

The other parameters under the control of the designer are the number of wells in a period, and the maximum depth of a well. The maximum depth controls the lowest frequency absorbed and was arbitrarily fixed at 10 cm for this study. For the work that follows, $N=7$ was chosen because it enables direct comparison, both theoretically and experimentally, with previous work. It will be shown later, however, that the number of wells per period can be reduced.

The absorber and perforated plates having the same parameters as the preceding section has been optimized. The number of constant wells with perforated plates is three, which were in wells 1, 4, 7; the number of variable wells without perforated plates is four; the resistant layer used has resistance 180 Rayls. In the range by the optimization process, the length of wells with perforated plates is fixed at 10 cm to guarantee a good performance at low frequencies; the variable depth's length is restricted to a maximum of 10 cm. The performance is optimized up to 3 kHz. The theoretical result is shown in Fig. 6 together with corresponding measurement results. The depth sequence is shown in Table I. Figure 6 also shows the comparison between the new structure and the optimized structure with the same parameters without perforated plates. It clearly shows the high absorption is now achieved at lower frequencies.

The results above also provide some circumstantial evidence as to why poorly constructed diffusers have high absorption,⁵ with this high absorption occurring at low frequencies below the design frequency. There is a suggestion that this additional absorption must be due to coupling to air cavities. Hence, this emphasizes the need for well sealed

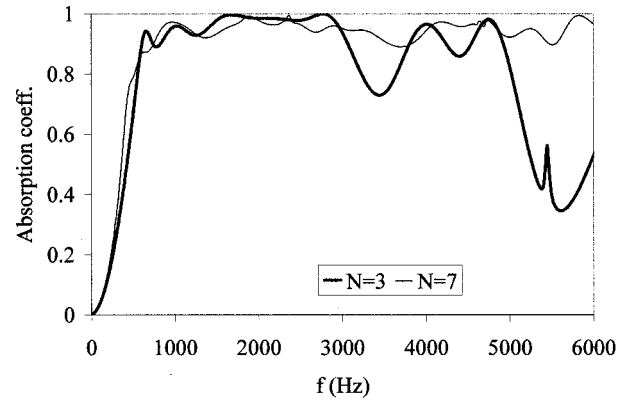


FIG. 7. Optimized absorbers for different number of wells per period N .

constructions when trying to manufacture phase grating diffusers with low absorption.

B. Experimental verifications

The tests are carried out in the impedance tube, the optimization is repeated to take into account of mirror images, the resistance of the wire-mesh applied is 180 Rayls. The perforated plate is the same as tested in Sec. II B. The optimized structure is shown in Fig. 2.

Figure 6 also compares the prediction and the measurement of the sample and good agreement was found. In addition, the perforated design is compared to an optimized configuration without perforations, details of which are given in Ref. 6. The addition of perforations enables the absorber to start working at a frequency nearly an octave lower than before. This demonstrates the usefulness of this new design in gaining additional low frequency absorption.

C. Number of wells per period, N

A series of optimizations were carried to gain an understanding of the importance of the number of wells per period, N , to the quality of absorption obtained. Rather surprisingly, it was found that over the bandwidth being considered, up to 3 kHz, that an absorber based on $N=3$ works almost as well as one based on $N=7$. Figure 7 compares the performance for two optimized absorbers. Up to 3 kHz, the performance is comparable, but at a higher frequency, the higher N number performs better. This happens because the density of resonances is significantly less for $N=3$ above 3 kHz when compared to $N=7$. Reducing N could be useful as it simplifies the design and so may reduce manufacturing costs. Simi-

TABLE I. Some well sequence depths used (cm).

Sequence	l_{n1}	l_n	l_n	l_{n1}	l_n	l_n	l_{n1}
Optimized depth sequence	5.2	5.3	6.9	1	9.5	10	4.8
	l_n	l_n	l_n	l_n	l_n	l_n	l_n
Depths using new design technique, no perforations	10	4.9	3	6	4.2	7.6	3.7
	l_{n1}	l_n	l_{n1}	l_n	l_n	l_{n1}	l_{n1}
Depths using new design technique, with perforations	10	4.8	3.9	8	6.8	1	7

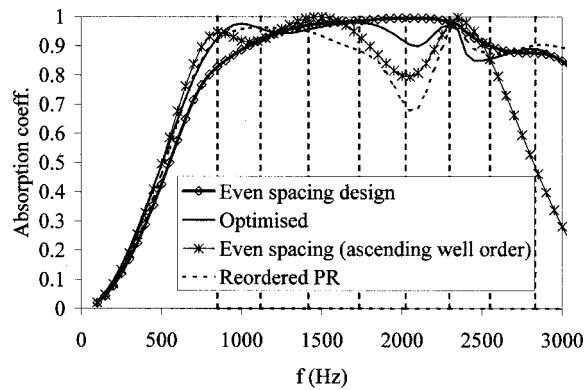


FIG. 8. Performance of four different absorbers without perforations. The vertical lines indicate the location of the well resonances for the even spacing design.

lar results were also found for absorbers without perforations. Incidentally, the choice of the correct value flow resistivity for the resistive layer is even more important for low N absorbers.

VI. SIMPLER DESIGN METHODOLOGY

In previous work, a numerical optimization procedure was used to obtain the depth sequence used. This is a slow and complex procedure. Consequently, a more straightforward design technique is desirable to practitioners. An analogy with Schroeder diffusers can be drawn. While it has been long established that the quadratic residue sequence can be bettered by optimization, for example, Ref. 11, the sequence remains popular because of the ease of using a small number of simple design equations.

A simple design procedure for the absorber will be outlined below, first the case of a profiled absorber with no perforated sheets will be considered as it is simpler, and then it will be shown how this can be extended for the absorbers with perforated sheets.

A. Profiled absorber, no perforated sheet

At a first approximation, neglecting viscous boundary layer losses in the well, each well is a quarter wave resonator with resonant frequencies given by

$$f = \frac{(2m+1)c}{4l_n}, \quad m=0,1,2,3,\dots \quad (12)$$

To maximize the absorption it is necessary to evenly space these resonant frequencies over the design bandwidth avoiding degenerate modes, i.e., modes with similar resonant frequencies. This can be simply achieved by a trial and error process using a calculation tool such as a spreadsheet. Once the depths are determined, it is necessary to order them to maximize the losses due to energy flow between the wells. To achieve this, wells causing adjacent frequency resonances, should not be physically next to each other. This can be done quickly by hand. Table I shows an example depth sequence formed using this procedure.

Figure 8 compares the performance of this design, to one produced using an optimizer.⁶ The performance of the absorber using the simpler design procedure is good. As

might be expected the optimization gives slightly better results, but that design involved considerably more computation and human effort. The resonance frequencies used during the design are also marked. The drop at high frequencies, >2.5 kHz, occurs due to lack of resonances in the region above 3 kHz. To illustrate that the ordering of the wells is important, the graph also shows the results when the wells are stacked in ascending order. There is considerably less absorption, demonstrating the importance of exploiting the well coupling.

This procedure has similarities to a design approach forwarded by Mechel.⁴ He suggested placing adjacent-in-frequency resonant wells physically far apart to maximize even coupling. He also suggested using a more even density of resonant modes by using a monotonically increasing well depth, like a “reordered primitive root sequence.” This system certainly improves on the quadratic residue sequence, but is not optimum. It is possible to get a more even mode density by a simple trial and error process than found with the reordered primitive root sequence (a linearly increasing depth sequence does not give even modal density). Furthermore ordering the wells in monotonically increasing depth does not maximize the spacing between adjacent resonant modes. Consequently, the new procedure can be seen as a better use and refinement of the principles laid down by Mechel. It also produces better absorbers. The “reordered primitive root sequence,” labeled “reordered PR,” is shown in Fig. 8. The new procedure produces a better absorber.

B. Profiled absorber with perforated sheets

The design is a little more involved when using perforated sheets. The problem is that the resonance frequencies of the compound wells cannot be predicted using a formula as simple as Eq. (12). Instead the resonances are located from the imaginary part of well entrance impedance, Eq. (5). It is not possible to analytically solve Eq. (5) to gain the resonant frequencies, but a simple numerical method quickly yields the values. (Again, during the design an assumption that the propagation number is not altered by viscous boundary losses is made to simplify the equation.) Then the two design principles are applied (i) the resonances are made as evenly spaced in frequency as possible, and (ii) the energy flow between wells maximized by dispersing wells with adjacent-in-frequency modes.

Figure 9 compares the new design methodology to the optimized depths previously presented. The depth sequence is given in Table I. As expected, the optimizer does slightly better, but the simplified design procedure produces high absorption from less effort.

VII. CONCLUSIONS

The above study has shown the usefulness of perforated sheets in the wells to achieve a more wide band absorption from a profiled construction. The optimized constant depth concept employing perforated plate can produce better absorption than the ordinary absorber with perforated plate fixed at the top of the cavity. However, the frequency band is still narrow. The new optimized structure combined variable

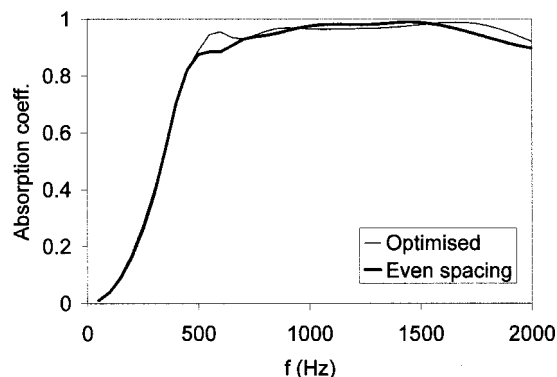


FIG. 9. Two absorbers using perforated plates in some of the wells. The first is designed using numerical optimization, the second by spacing resonances evenly in frequency.

depth sequence and perforated plates extends the absorption to lower frequencies as well maintaining good mid frequency absorption, and hence becomes a considerably better wide band absorber. In addition, a design procedure, which is more straightforward than numerical optimization, was outlined and shown to give high absorption designs.

Incidentally, this new design also does better than more traditional Helmholtz designs, where the perforated sheet and resistive material are at the well entrance. Optimizations were carried out on a series of different Helmholtz absorbers stacked next to each other, but the new design was better. The extra degrees of freedom offered by having a variably positioned perforated sheet in the well seems to be a key ingredient to the good broad band absorption, and the mass

term in the traditional Helmholtz design causes problems in achieving broad band absorption as the mass term narrows the resonances. Consequently, an improved absorption structure has been produced and validated.

ACKNOWLEDGMENTS

This work was funded by the Engineering and Physical Sciences Research Council (EPSRC) of Britain, under Grant No. GR/L34396.

- ¹P. D'Antonio and T. J. Cox, "Diffusor application in rooms," *Appl. Acoust.* **60**, 113–143 (2000).
- ²K. Fujiwara and T. Miyajima, "Absorption characteristics of a practically constructed Schroeder diffuser of quadratic-residue type," *Appl. Acoust.* **35**, 149–152 (1992).
- ³H. Kuttruff, "Sound absorption by pseudostochastic diffusers (Schroeder diffusers)," *Appl. Acoust.* **42**, 215–231 (1994).
- ⁴F. P. Mechel, "The wide-angle diffuser—A wide-angle absorber?," *Acustica* **81**, 379–401 (1995).
- ⁵K. Fujiwara and T. Miyajima, "A study of the sound absorption of a quadratic-residue type diffuser," *Acustica* **81**, 370–378 (1995).
- ⁶T. Wu, T. J. Cox, and Y. W. Lam, "From a profiled diffuser to an optimised absorber," *J. Acoust. Soc. Am.* **108**, 643–650 (2000).
- ⁷K. Fujiwara, K. Nakai, and H. Torihara, "Visualisation of the sound field around a Schroeder diffuser," *Appl. Acoust.* **60**, 225–236 (2000).
- ⁸A. W. Guess, "Result of impedance tube measurements on the acoustic resistance and reactance," *J. Sound Vib.* **40**, 119–137 (1975).
- ⁹P. M. Morse and K. Ingard, *Theoretical Acoustics* (McGraw-Hill, New York, 1968), Chap. 6, pp. 285–291.
- ¹⁰W. H. Press *et al.*, *Numerical Recipes* (Cambridge University Press, Cambridge, 1989), Chap. 10, pp. 289–293.
- ¹¹T. J. Cox, "Optimization of profiled diffusers," *J. Acoust. Soc. Am.* **97**, 2928–2941 (1995).